

SPACES & PLACES

12 APRIL 2021

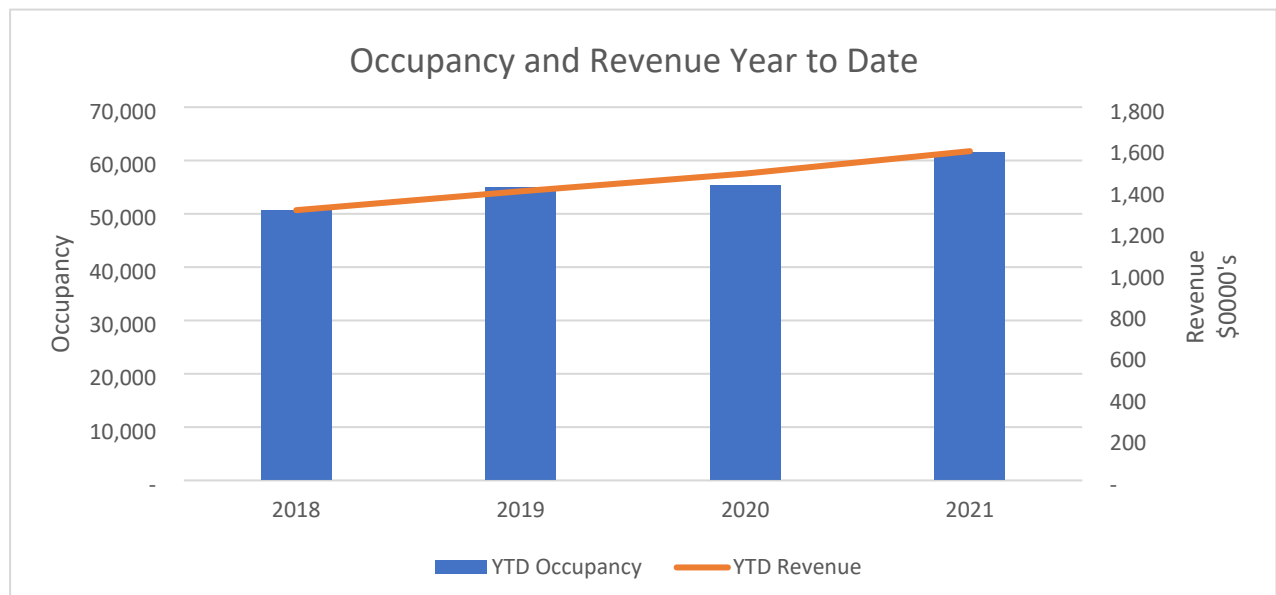
Spaces & Places

1. The contract with Hawkins has been signed and sub-contractor Higgins is in place for the Elizabeth Street Upgrade project. Streetscape works are scheduled to start on First Ave in April 2021 and on Elizabeth Street in June 2021. Completion of the streetscape upgrade works are aligned with completion of the Farmers development, which is currently due to be completed in late-2021. The project is within the budget forecast and includes risk and contingency sums. Services renewals are finishing on First Ave and have recently commenced at the eastern end of Elizabeth Street.
2. The Omanawa Falls project is on track to have the first phase of safe access in place for this coming summer. A resource consent application will be submitted in April 2021. Costing will be finalised once contractor prices for the track and carpark works are received in May and June 2021. Along with partners Ngāti Hangarau and Tourism Bay of Plenty, council staff presented an update to the Western Bay of Plenty District Council (WBOPDC) Monitoring Committee on 16 March 2021, which was well-received. WBOPDC has confirmed that the project structures (ladders/platforms) will be exempted from building consent requirements.
3. The ownership of reclaimed land on the seaward side of Dive Crescent site ownership has now been resolved and the land will be held in joint ownership by Council and the Otamataha Trust. In the short-term, the Spaces & Places team will work with the Trust to address several outstanding issues, including improvements to the Cargo Shed building to address earthquake strengthening requirements. Outdoor areas will be remediated to ensure the site is an accessible, safe and attractive space for the public to enjoy. Some buildings on the landward side of Dive Crescent will be demolished, reflecting their very poor earthquake rating, and affected tenants will need to relocate. The vacant sites will be used for car parking in the short-term.
4. A wide variety of renewals and minor capital projects are underway and/or have been recently completed by the Parks & Recreation team, including:
 - Line marking at Taylors Reserve has been completed;
 - Disabled parking bays and line replenishments have been completed at the Stella Place car park in Papamoa;
 - The Papamoa Domain boardwalk renewal is in progress – this work has been on-hold due to the Papamoa Surf Lifesaving Club building project, but is expected to be completed in the next few weeks;
 - A full irrigation renewal has been completed at Links Avenue Reserve, as well as a rebuild of the main training field, including new drought-resistant and resilient turf. The park will be ready for use for the coming football season;
 - Renewal of the four astroturf tennis courts at the Western Bay of Plenty Tennis Centre at Gordon Spratt Reserve was completed in February 2021. This is the second stage of the renewal of all tennis court surfaces at the Gordon Spratt Reserve complex;
 - New walkways have been created at Ohauti Reserve, where deep erosion lines were present as consequence of foot traffic, with the walkway now leading to the picnic table;

- The Mauao 4x4 track from the summit down to the bush line has been renewed and a safer surface has been achieved for people using this track. Improvements have also been made to the steep goat track on Mauao, with stairs added to make it safer for public use;
 - The cremator replacement is in progress at the crematorium building. An electrician and gas fitter have been onsite to connect the cremator to the appropriate services and a new flue has been craned into place.
5. Planned Coastcare works involving a digger removing sand contaminated with Indian doab, burying in-situ, replacing with clean sand and planting with natives, will begin in April. Several re-encroachments by beach front residents into the Coastal reserve are being followed up for action on Oceanbeach Rd, Taylors Rd and Motiti Rd.

Property Management

6. Work continues on the Elder Housing Divestment process, with tenant notifications last week and tenant meetings underway with the tenants of Pitau and Hinau Streets. The proposal to sell these units separately from the rest of the portfolio will be part of the upcoming Long-term Plan consultation process.
7. Planning is underway to commence work on Elizabeth St and Spring St car park buildings to begin precautionary seismic strengthening work.
8. Beachside Holiday Park occupancy is continuing to increase, currently up 11.25% YTD.
For the 1 July 2020 – 28 February 2021 period, the park had 61,557 customers, compared to 55,329 customers in the 1 July 2019 – 29 February 2020 period.



31 MAY 2021

1. Services renewals for the Elizabeth Street Upgrade project have now been completed on First Avenue and will begin on Elizabeth Street itself in June. Streetscape works have commenced on First Avenue, with a focus on the construction of pedestrian crossings, landscaped kerb buildouts and stormwater treatments. Daytime road closures are anticipated on Devonport Road to enable the completion of the raised crossings. Completion of the overall project is tied to completion of the Farmers development, now

called the 38 Elizabeth development. The Farmers retail store is planned to open for Christmas shopping, whilst construction of the towers and fit out of the apartments will be ongoing into next year. Hawkins, Farmers and TCC continue to work closely together to coordinate work programmes.

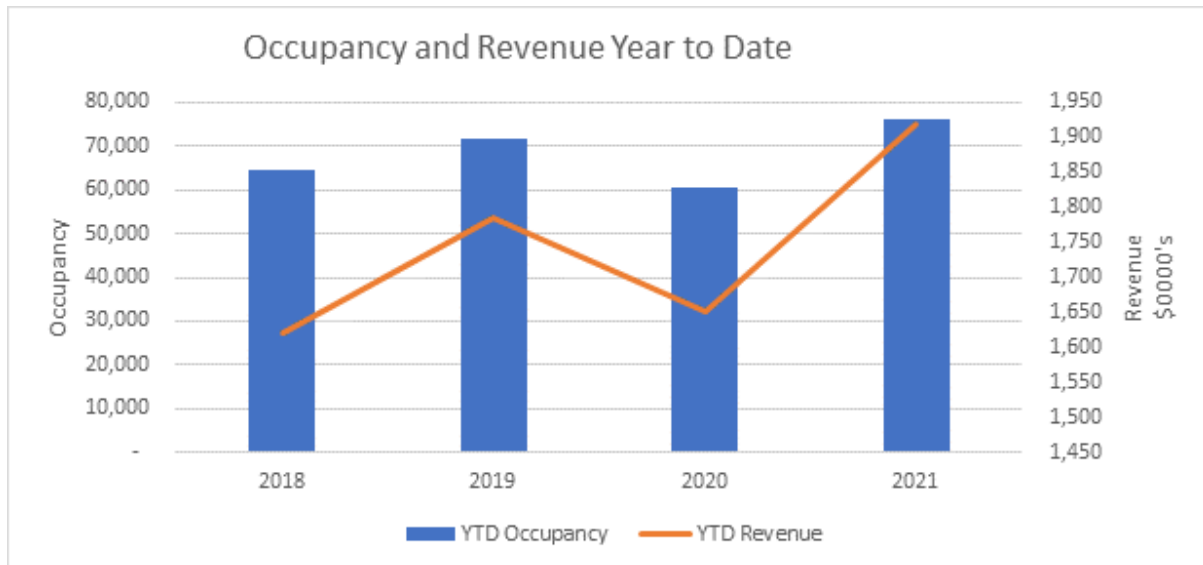
2. As previously reported, parts of Elizabeth Street Carpark building do not meet the minimum 34% 'new building standard' (NBS) rating, which technically means the building could be classified as earthquake-prone. Strengthening schemes for the building to achieve at least 55-60% NBS are being developed and will focus on ramp transitions in the first four levels of the building, and connections between the eastern stair tower and the building. The building is co-owned and the Body Corporate has met to discuss engineering findings, plans, and the estimated costs and apportionment for the remedial strengthening works. These meetings are ongoing, including conversations to minimise any effects of the work programme on the co-owners of the commercial spaces. Full car park closure will not be required when works are undertaken.
3. Naylor Love has been awarded the contract to carry out interim strengthening works on the Spring Street Carpark building. This work involves installation of steel posts for added resilience to a large area of blockwork on the North Eastern corner. Work began on Monday 17 May and will be completed in five weeks. Approximately 12-14 carparks will be affected per day during the works and this is being managed through Carepark (TCC Carpark operators).
4. Phase two of the Spring Street Carpark project is the full seismic strengthening to at least 55% NBS. This work is in the design stage, which will take around four months to complete. Work to be undertaken includes the installation of additional steel bracing components and the provision of independent support for the bridge linking to the roof of the adjacent building at 29 Grey Street. While the initial work will be scheduled to minimise inconvenience for regular users, it is likely that the building will need to be closed to the public for a period of time during the full strengthening works.
5. A project team has recently been set up with the objective of looking at the area around Dive Crescent, on both sides of the road, to see what short term improvements are possible. Members of this project team attended the most recent Dive Crescent Governance Group meeting to provide an update to representatives from the Otamataha Trust and Commission and discuss a partnership structure for working on this project together.
6. In December 2020, a building consent was lodged for seismic strengthening of the Cargo Shed building to a targeted 67% NBS for the superstructure. However, the overall building seismic rating will sit at 40% NBS, limited by the slope stability as a result of the land composition and its location. The Building Control Authority has requested further information on geotechnical and engineering matters, and these are currently being addressed. A plan will be developed for the redevelopment of the Cargo Shed over the coming months, to meet NBS requirements and open it up for ongoing community use.
7. The Omanawa Falls partnership continues to work closely together on the three dedicated streams of work: Safe Access, Ownership and Experience. Lodgement of consent is still to occur, while engagement with neighbours and other stakeholders continues. The programme is dependent on the consenting process, which is likely to be publicly notified. The successful kaitiaki programme finished in April and will be rolled out again this coming summer to manage visitors while construction is completed in stages.
8. It is currently expected that construction of the Kulim Park upgrade will commence around the end of August, with the bulk of works (including alterations to the existing road, carparking and new pathway) completed in December. Play equipment, playground surfacing (wet pour) and the boardwalk decking timber are about to be

ordered, although delivery times for these items are to be confirmed. Veros has been appointed to undertake the Project Management and Higgins has been awarded the construction contract.

Beachside Holiday Park

9. Beachside Holiday Park occupancy is continuing to increase, currently up 25% YTD.

For the 1 July 2020 – 30 April 2021 period, the park had 76,075 customers, compared to 60,542 customers in the 1 July 2019 – 30 April 2020 period.



12 JULY 2021

10. Renewals for the Elizabeth Street Upgrade project have now been completed on First Avenue and Devonport Road and are due to be completed on Elizabeth Street in July.
11. Streetscape works are underway on First Avenue, Devonport Road, the laneway and Elizabeth Street, with a focus on the construction of pedestrian crossings, landscaped kerb build-outs and stormwater treatments. Daytime road closures are anticipated on Devonport Road to enable the completion of the raised crossings. Elizabeth Street is likely to reduce to one-way access in July, to enable a crane required for the Farmers development to be placed on the street. The crane is likely to be in place until February 2022.
12. Completion of the overall project is tied to completion of the Farmers development, now called '38 Elizabeth'. The Farmers retail store is planned to open for Christmas shopping, whilst construction of the towers and fit out of the apartments will be ongoing into next year. Hawkins, Farmers and TCC continue to work closely together to coordinate work programmes.
13. A project team has recently been set-up with the objective of looking at the area around Dive Crescent, on both sides of the road, to see what short-term enhancements are possible. Members of this project team attended the most recent Dive Crescent Governance Group meeting to provide an update to representatives from the Otamataha Trust and Commission, and discuss a partnership structure for working on this project together. In December 2020, a building consent was lodged for seismic strengthening

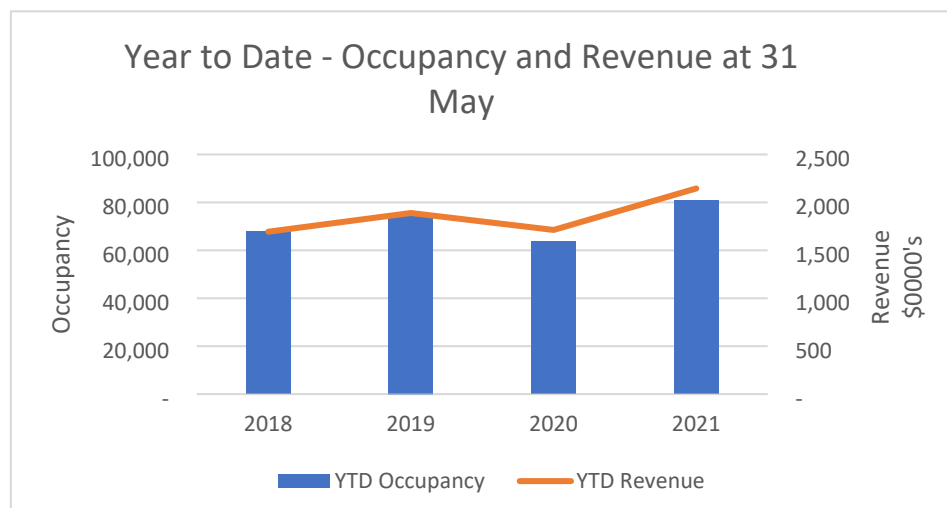
of the Cargo Shed building to allow the building to be refurbished and made available for public use.

14. Construction of the Kulim Park upgrade is scheduled to commence at the end of August, with the bulk of works (including alterations to the existing road, carparking and new pathway) planned to be completed in December 2021.
15. Our Place (including the Re-maker Space) will continue to operate at the Civic Precinct site until the end of October 2021. Our Place will then be decommissioned to make way for demolition activity ahead of redevelopment of the site.
16. In partnership with Sport Bay of Plenty, staff are commencing a future state analysis with user groups of Blake Park. This exercise will also be undertaken with user groups at Gordon Spratt/Alice Johnson Reserve. There will be an iteration between these projects and the wider Sport and Active Living Strategy Review work, also about to commence.
17. The Kopurererua Valley stream realignment earthworks tender was released at the end of June. Detailed design is progressing well, with a review undertaken by TCC stakeholders to confirm stream and cycleway realignment options.
18. The Omanawa Falls partnership continues to work closely together on the three dedicated streams of work: Physically and Culturally Safe Access, Ownership and Commercial Experience. The programme is dependent on the consenting process, which will now be publicly-notified. Resource consent will be lodged in July with a decision anticipated in December 2021/January 2022. Engagement with neighbours and other stakeholders continues, including a meeting with residents which took place at the Omanawa Hall on 16 June. A kaitiaki programme, similar to last summer's successful programme, will be rolled-out again this coming summer, to manage visitors while construction is completed in stages.
19. The trig station at the summit of Mauao was removed in mid-June. This was in preparation for a 'cultural compass' that is planned to be installed in the coming financial year. The trig was removed prior to Matariki, so that a karakia could be performed with the two Mauri stones which will be buried under the new cultural compass. The purpose of the compass is to recognise and celebrate the mana of Te Tihi o Mauao (the summit of Mauao). This compass will feature touchstones at the centre, which carry mauri (lifeforce) to maintain the mauri of Mauao. Radiating from the touchstones, the compass design will identify significant sites on the maunga, outlying landmarks and islands, and select star and sun positions.
20. Work has begun to restore the Waipatukakahu Puna (stream) on Mauao and re-establish the site for its traditional cultural purpose. Eight exotic trees have been successfully removed from the site and work will begin soon to prepare the site for the first stage of planting.
21. The Elmes to Bay Street boardwalk construction is commencing; piles have been strategically dropped via helicopter into the reserve to limit disturbance. Project delivery is expected to take approximately four weeks, based on timelines for similar previous projects.
22. A wide variety of renewals and minor capital projects are underway and/or have been recently completed by the Parks & Recreation team, including:
 - Five new bench seats and two picnic tables have been installed along the length of the Wairoa Esplanade Reserve. More trees have been planted to provide shade in the future. Another set of stairs has been installed to stop the erosion effect caused by dogs accessing the river and the wetland around the latest stretch of boardwalk has been prepared for planting, which will occur before the end of July;

- Tidal surges in May and June 2021 have resulted in a number of repairs being carried out on harbour erosion protection structures across the city;
 - Completion of a new playground, pathways and seating at Parewaitai Reserve;
 - Extensive renewal of the Omanu carpark, fences, sand-ladders and signs, to make the area safer and more aesthetically pleasing.
23. New CCTV cameras have been installed at McLaren Falls Park, to provide better management and discourage antisocial behaviour, along with the installation of new gates and a redeveloped entrance to provide a safer environment. Food-providing trees have been planted for the wider community to enjoy, with over 50 planted in recent months.
 24. The city's specimen tree planting and replacement tree planting programmes are now underway. The focus will continue to be on appropriate species in appropriate places, with an emphasis on shade for playgrounds, parks and reserves. Staff and contractors will be planting over 800 trees this planting season.
 25. As part of this year's international Arbor day celebrations, the urban forest team visited Papamoa College to undertake some tree planting and education work with a group of students. A selection of native trees, kindly donated by Tauranga Tree Company, were planted on the grounds with some great assistance from the Year 7 students.

Beachside Holiday Park

26. Beachside Holiday Park occupancy continues to reach new heights, currently up 27% for the year to date.
27. For the 1 July 2020 – 31 May 2021 period, the park had 80,688 customers, compared to 63,562 in the 1 July 2019 – 31 May 2020 period.
28. Record-breaking occupancy has generated over \$2M in revenue, year-to-date.



30 AUGUST 2021

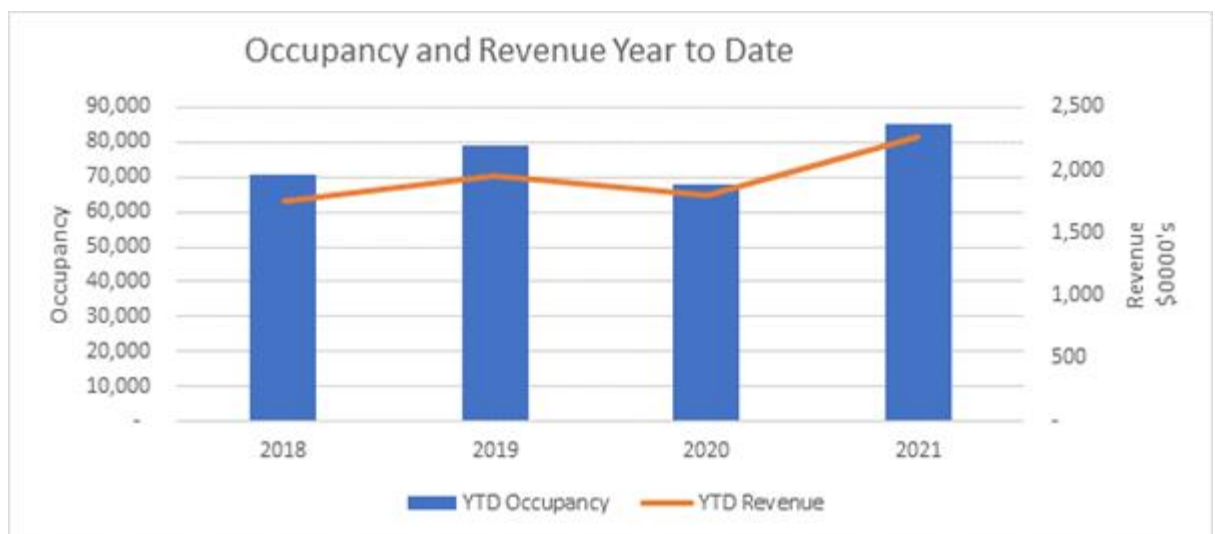
1. A dedicated project team has been working quickly to look at the area around Dive Crescent, on both sides of the road, to see what short-term enhancements are possible. Plans include demolition of the Iron Design building and seismic strengthening of the Cargo Shed building, to allow the building to be refurbished and made available for public use early in 2022.

2. Construction of the Kulim Park upgrade is scheduled to commence at the end of August, with the bulk of works (including alterations to the existing road, carparking and new pathway) planned to be completed prior to Christmas 2021.
3. Our Place (including the Re-maker Space) will now continue to operate at the Civic Precinct site until early-February 2022. This timeframe has been extended from October 2021 to allow for a busy schedule of events through the summer months, supporting activation and vibrancy in the city centre. Our Place will then be decommissioned to make way for demolition activity ahead of redevelopment of the broader Civic site.
4. In partnership with Sport Bay of Plenty, staff commenced co-design workshops with all of the users of Blake Park on 2 August 2021, as agreed in the Long-term Plan. This first of three sessions will form the basis of a masterplan for Blake Park, including the changes and improvements to be delivered over the next few years to create a cohesive active reserve. This exercise will also be undertaken with user groups at Gordon Spratt and Alice Johnson Reserve.
5. Tenders for the Kopurererua Valley Stream realignment earthworks are currently being evaluated and it is anticipated that a contractor will be appointed by the end of August 2021. The stream alignment and cycleway options have been confirmed. A review of the existing resource consents has been completed by BOPRC, with confirmation that there will be no additional resource consent requirements for the project. The team is working towards commencing on-site in November, which is the right time for works to be undertaken in a wetland.
6. Renewals for the Elizabeth Street Upgrade project have now been completed on First Avenue and Devonport Road, and are due to be completed on Elizabeth Street in August. Streetscape works are underway on First Avenue, Devonport Road, the laneway and Elizabeth Street, with a focus on the construction of pedestrian crossings, landscaped kerb buildouts and stormwater treatments. Construction of the linear park outside Farmers will now commence, following removal of the large Hawkins crane. Elizabeth Street has reduced to one-way access to enable streetscape works and the Farmers construction to occur simultaneously. It is likely that the westbound lane will be closed until March 2022.
7. The cliff stabilisation and access track works at Omanawa Falls are currently out for tender, in order to be able to complete detailed design.
8. Around 1,500 native grasses have been planted as a trial on Mauao and 3,000 native trees have so far been planted on Mauao by volunteers. Four new self-resetting traps have been installed to address pest issues around our Oi (grey-faced petrel) populations.
9. A wide variety of renewals and minor capital projects are underway and/or have been recently completed by the Parks and Recreation team, including:
 - The new playground at Te Paeroa is almost complete, with shade sail poles now having been installed, and the new playground build at Heron Ave East is also almost complete.
 - A new masonry bridge is currently being installed at the Kiriwai Place Reserve, Matua, to replace an existing masonry bridge which has reached the end of its life.
 - Tuihana Reserve playground works have commenced. The site is excavated, and playground equipment is currently being installed. Surfacing, paths and seating will follow; and completion is expected in early-September.
 - The slip at McLaren's Falls, which resulted in the loss of half of the track, has been removed and the track repaired and reopened.
 - The revegetation infill planting programme has nearly been completed for 2021.

- 76 Pohutukawa trees have been planted along Papamoa Coastal Reserve.
 - NZ Dotterel nesting areas on Main Mount Beach have been fenced, in conjunction with DOC.
 - This season's revegetation planting at Te Ahui Pa site has been completed. Approximately 7,000 plants and trees have been planted, which will enhance the biodiversity of flora and fauna in this area.
10. Pyes Pa Memorial Park's new major cremator is fully-installed, and staff have had the required training in order to operate this new piece of equipment. We are also putting line markings on the crematorium floor to show safe walking areas and danger lines for when the cremators are in operation. We are getting quotes for a new infant burial section and extension of our current Memorial Ashes gardens.

Mount Beachside

11. Beachside Holiday Park occupancy continues to reach new heights, currently up 25% for the year-to-date.
12. For the 1 July 2020 – 30 June 2021 period, the park had 85,452 customers, compared to 67,950 in the previous year.
13. Record-breaking occupancy has generated over \$2.2M in revenue, year-to-date.



Property Management

14. The Property Management team has mapped all the current agreements across the city on a new Smartzoom map layer. This project allows internal staff to view lease, licence and other agreements managed by the Property Team, to help with project collaboration and better customer service across TCC.

4 OCTOBER 2021

Elizabeth Street and Spring Street Carpark

1. As previously reported, the Council-owned Elizabeth Street and Spring Street carpark buildings require seismic strengthening.

2. Building consent applications have now been lodged for the seismic strengthening plans for both carparks and an opportunity exists to complete the seismic upgrade works within the current financial year.
3. Following recent ROI and RFT tender processes on other construction projects, there is real concern in the market that main contractors are so busy, they may be less willing to participate in new tenders. Staff are therefore working with the market to mitigate this by selecting three suitably-experienced contractors to tender the work as soon as possible.

Lavender Place

4. At the request of local residents, a resolution was passed by Council on 27 October 2020 to remove the two tallest trees on Lavender Place. One of the trees has since been removed and replaced with a *Lagerstromia indica* (crepe myrtle).
5. During the consultation phase of the works, the resident at 15 Lavender Place, the location of the second tallest tree, wrote to council indicating he would like the tree to remain. This resident stated, "I felt rather neutral on the issue and did not feel very informed, nor did I fully understand the impact that this could have on myself."
6. Our staff made the decision to hold-off removing the second tree after receiving this new information, and now request to have the original decision to remove this tree rescinded. No further complaints have been received since the first tree was removed.

Spaces and Places

7. There is progress in improvements to the Dive Crescent area, with the recent demolition of the Iron Design building. Amenity enhancements to the area will be undertaken prior to Christmas. The strengthening and refurbishment of the Cargo Shed building is also progressing, to allow the building to be made available for public use early in 2022. Transfer of title for the land on the seaward side of Dive Crescent to Council and the Otamataha Trust is in its final stages with LINZ.
8. Construction of the Kulim Park upgrade commenced as soon as Alert Level 4 restrictions were lifted. The first stage involves building a shared pathway linking Harbour Drive to Kulim Park, completing a missing link in the shared pathway network along the harbour edge. The bulk of works (including alterations to the existing road, carparking and new pathway) are planned to be completed prior to Christmas.



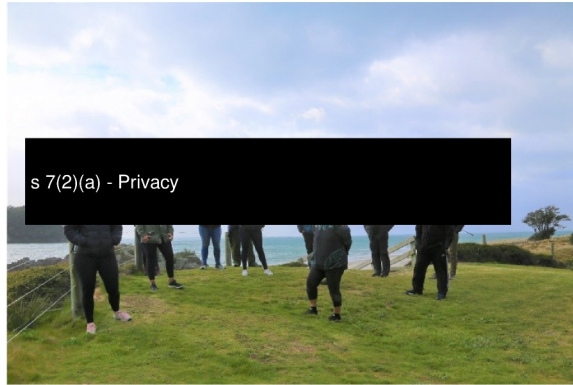
9. Works associated with the Elizabeth Street upgrade are focused on the creation of the linear park on the south side of Elizabeth Street, which requires closure of the westbound lane until approximately March 2022. The streetscape upgrade is being constructed in tandem with the Farmers development and continues to be impacted by changes to the Farmers programme. Delays associated with lockdown are currently at around three weeks, but could be impacted further due to constrained supply while

Auckland has been at Alert Level 4. Communication with stakeholders continues on a weekly basis.

10. The resource consent for the Omanawa Falls project has been publicly notified, with hearings anticipated in November/December and a consent decision expected by February 2022. The project team is in the process of confirming a preferred contractor for the cliff stabilisation and access track works, so that detailed design can be completed while the consent process is underway.
11. An earthworks contractor has been appointed for the Kopurererua Valley Stream Realignment project and the project team has commenced a series of engagement workshops with the contractor around the project design and construction methodology, working towards commencing work onsite in November.
12. Our Place, including the Re-maker Space, will continue to operate at the Civic Precinct site until early-February 2022. This timeframe has been extended from October 2021 to allow for a busy schedule of events, and to support activation and vibrancy in the city centre through the summer months. The Our Place team will adapt to any alert level restrictions but are confident an exciting programme of events will still be delivered. Our Place will then be decommissioned to make way for demolition activity ahead of redevelopment of the broader Civic precinct site.
13. The impact of lockdown on sporting fixtures has meant staff have worked closely with Bay of Plenty Rugby and the other main sporting codes at the Domain (athletics and cricket) to allow a longer rugby season. This has impacted the break between the winter and summer seasons, meaning that there is not enough time to undertake the grandstand redevelopment project this calendar year. A compromise has been agreed where the works are planned to be undertaken in the next gap between summer and winter seasons in March/April 2022.
14. Improvements to the Te Ranga historical site have commenced, with clearance of the hedge along the road boundary in preparation for installing an earth bund. Other work includes weed clearance along the escarpment in preparation for additional native plantings. Schools are engaged with the project to assist with planting new trees and learning about the history of the site through partnership with the Pukehinahina Trust. Other improvements, including car parking, interpretation and cultural art elements are currently in the design phase.



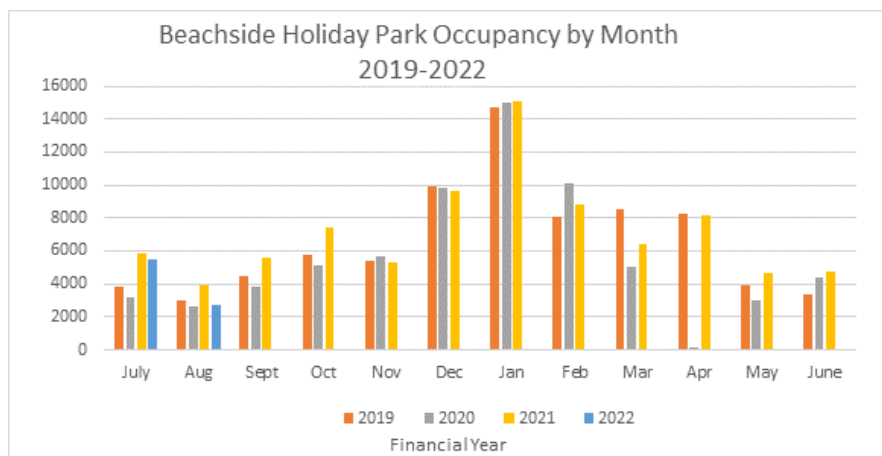
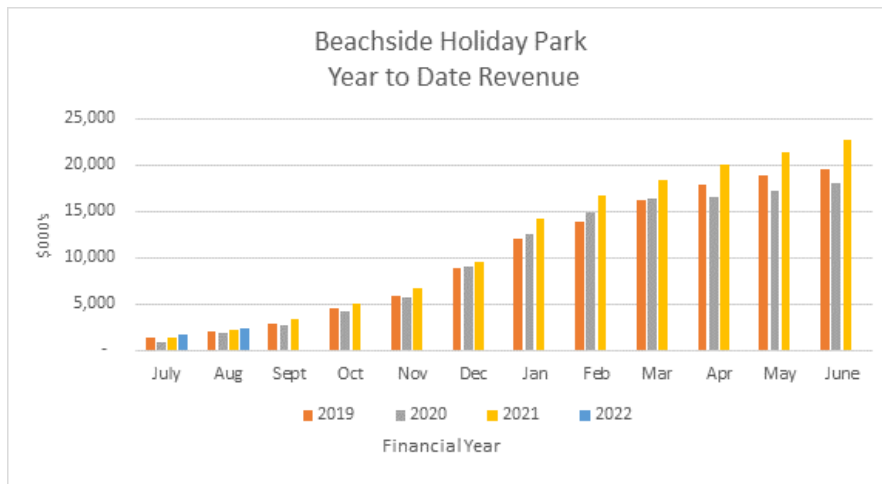
15. The first hikoi/site walk along the possible route of the Marine Parade Coastal Path was held on Friday, 10 September, involving mana whenua representatives, design consultants and our staff. Conditions were cold but it proved to be a highly productive visit with lots of insights gained, which will provide an excellent basis to move quickly to the next stages of the project.



16. Mauao had four volunteer planting days before the latest lockdown. Over these four days, 214 people, including 113 children from local Kura, planted approximately 3,745 native trees. This effort equated to approximately 450 volunteer hours. The restoration of Waipatukakahu is progressing, with the first stage of planting now complete. This included 900 native grasses, 300 muehlenbeckia, 8 tī kōuka and one totara.
17. Work has restarted on the Elmes Reserve to Bay Street walkway post-lockdown, with the final stages of the project involving fitting and cutting to shape the top treads. The project is expected to be complete in early-October.
18. A wide variety of renewals and minor capital projects are underway and/or have been recently completed by the Parks and Recreation team, including:
 - The annual early-spring reserve prickle and broad leaf weed control programme commenced in August, with over 60 neighbourhood and high-use reserves across the city receiving one surface spray to increase turf quality, and to control prickle weeds;
 - The waterfall track at McLaren Falls Park has been renewed, resulting in a much better walking experience;
 - The Accessible Changing Facility at Mount Drury Reserve is up and running again, with the final touches being completed in the next few weeks. Staff are planning a public opening in late-October.
 - A walkway that accesses Johnston Reserve and is used daily by tamariki has been renewed. This improvement has made the highly-used track safer for all users.
 - The final part of the Tuihana Reserve playground build is underway, with concrete poured, turf paths installed and wet pour safety surfacing undertaken at the end of September;
 - Our contractors have taken back the task of line-marking fields for all the community sporting codes. This has received very positive feedback from a range of clubs and organisations, as it saves the club material costs and volunteer time. Because agrichemicals will not be used to burn in the lines for longer periods, the transition from one season to the next will also be a lot smoother.

Beachside Holiday Park

19. The Holiday Park continues to perform strongly as a great holiday location for kiwis now unable to travel abroad due to covid restrictions. This month saw some reduction in numbers due to lockdown restrictions but again we expect the holiday park to perform well over the upcoming summer months



Property Facilities

- The Property Facilities team, in collaboration with the Transport team, has installed six new Electric Vehicle charging stations in the Spring St and Elizabeth St Car Parking buildings for a four-month trial period to determine the level of usage.



28 FEBRUARY 2022

- The new Kulim Park playground was blessed and opened prior to the Christmas break. Mana whenua have been heavily involved in the design of this playground. There has been a lot of positive feedback from families who enjoyed the new park over the holidays. Work is continuing on the installation of the remaining concrete footpaths, boardwalk/decking sections, and park furniture. Due to public feedback, a 3 x 3

basketball court has also now been added back into the project scope, replacing the old basketball court that was in Kulim Park. It is anticipated construction of the court will be completed in March.

2. A mini-skate ramp was installed at the Memorial Park skating area just before Christmas, following on from the recently-installed wedge ramp. The mini-ramp was conceived by Sam from Sam's Skate School. Sam funded half the costs using a grant he was awarded for his work in the community. Council provided the other half of the budget, with the skate community getting behind the construction. Further quick win projects are in development for other existing skate parks. Meanwhile, over 250 individuals volunteered to join the co-design group for the proposed destination skatepark. 24 have been chosen to be representative of a range of user types and the first workshop was held on 10 February. Rich Landscapes Ltd has been awarded the contract to deliver this project. A site is still to be confirmed, which will be the first challenge for 2022.
3. Construction work on the southern section of the Kopurererua Stream realignment project commenced in February. The work will see the creation of a new stream alignment, cycleway, and wetland.
4. The eastern section of the Elizabeth Street linear park is largely completed, with Farmers, Whitcoulls and Pascoes now open. Work around the Grey Street carpark is due for completion in March 2022. In parallel, we are also working on the Elizabeth Street East/Tunks Reserve section. A drop-in session for Tunks Reserve was held at the Regional Council building before Christmas and was attended by 15 groups or individuals. Feedback was positive and we are progressing to construction of this project, for completion in 2023.
5. The Elizabeth Street carpark construction contract has been awarded to Naylor Love. Work will commence on the carpark upgrade in February, once consent has been issued. Tender submissions have been received and assessed for the Spring Street carpark works. Building consent for the carpark upgrade has been lodged.
6. Ngāti Hangarau Kaitiaki have been onsite this summer at Omanawa Falls to deter people from visiting the site. Kaitiaki have reported that the number of daily visitors to the site is higher than last year. The hearing for the notified consent for the Falls access works has been delayed until April 2022.
7. A blessing of the new basketball court at Dive Crescent was held before Christmas and it is now open for use. Basketball Bay of Plenty donated several basketballs to the site, so everyone can have a go. More improvements to the Dive Crescent area will be delivered through 2022, including reopening the Cargo Shed for public use.
8. Public consultation was undertaken between 17 December 2021 and 31 January, to assist in the finalisation of the concepts for the Marine Parade Coastal Pathway. Signboards outlining the design and several prototypes of the boardwalk design were also placed on site. To help draw crowds in, an award-winning seating/sculpture installation – Nohonga – was gifted to the project over the summer holiday and has been temporarily installed, facing out to Moturiki and Motuotau islands. Over 350 responses were received, with ~90% of respondents strongly agreeing or agreeing with the proposed pathway. Other detail in the feedback received will help inform the design of the pathway. Construction is scheduled to begin later in 2022.
9. Community engagement commenced on 25 January, seeking feedback on how best to create a network of universally accessible and inclusive public places. Two community drop-in days will be held at the Hopukiore – Mount Drury reserve play area, and feedback is being invited until 28 February. The findings from accessibility audits of the play area and streetscapes connecting Hopukiore to Mount Main Beach, Mauao, Pilot Bay and Mount Main Street will also be received at the end of February. Information from the community engagement and accessibility audits will be used to help plan

interventions and upgrades in the Mount North area and develop a three-year plan for improvements and upgrades in other areas of the city.

10. As part of the Elder Housing divestment programme, a decision was made to demolish Pitau Village, with four of the six blocks being vacated late in 2021. The procurement plan was signed for this work to be carried out by the end of November, which meant a busy period to enable all the work to be completed prior to Christmas. Grass is planned to be sprayed at the end of March when the water restrictions lift, and this will leave the area as a nice green space.
11. Through the Long-term Plan submission process, a request was received to open a Container Café at Waipuna Park in Welcome Bay. Pippa's Pantry opened for business with little fanfare on 14 January, but was immediately well-patronised by the many casual users. As word spreads, the café should encourage increased use and enjoyment of the park.
12. A wide variety of renewals and minor capital projects are underway and/or have been recently completed by the Parks and Recreation team, including:
 - The Mount Beachside Holiday Park continues to perform strongly as a great holiday location for Kiwis now unable to travel abroad due to COVID-19 restrictions. We have seen some reduction in numbers due to the park requiring vaccine passes, but we expect the Holiday Park to perform well over the upcoming summer months. We hope to have our en-suite cabins available for customers in March.
 - The new stairs constructed in the Kopurererua Valley near the entrance off Faulkner Street are proving popular with locals. The stairs were listed as an action in the Kopurererua Valley development plan, to provide river access for kayaks. This type of structure is important to reduce bank erosion where people and dogs climb in and out.
 - We have completed the drainage work on the main field at Tauranga Domain. This will help improve the resilience of the field through the winter season, ensuring it is in excellent condition for the NPC Bay of Plenty Steamers, as well as ensuring it is fit for wider community use through the busy winter period. This is a positive step for this location, as it will create further opportunities for NZRU, with a strong focus on 7s and Woman's Rugby.

23 MAY 2022

1. Construction work on the Kulim Park upgrade is now complete. A Community Family Day held on Saturday 7 May to celebrate the completion of the park upgrade was very successful, with speeches by Commissioner Rolleston, and the great-nephew of the original landowner, Roger Rushden, who gifted the land to the Council. Also featured was face-painting and balloon animals, while support from Tauranga City Basketball saw 50 basketballs given to young people.



Family Day at Kulim Park on May 7

2. The Mauao Placemaking project has seen work start on the creation of a new celestial compass, to be installed on the summit of Mauao in time for Matariki celebrations. The installation of the compass and wayfinding signage is the start of the project to revitalise the interpretation of Mauao.



The bluestone plinth which will form part of the new celestial compass for the summit of Mauao.

3. A follow-up Pampas operation was completed at the end of March. Pampas is an invasive grass that outcompetes native species, as its seeds are windblown and can quickly spread. As with the first operation, this was carried-out with the use of a helicopter. The effectiveness of the first operation was very clear, with a large reduction in mature plants. The use of helicopters for tasks on Mauao has proven to be very efficient and will be further utilised in the future.
4. Several large exotic trees are planned for removal from the southern face of Mauao in May and June. These trees are beginning to fall apart in strong winds and risk damaging the archaeological features they are growing on. Due to the risk of damage to archaeology features and the significant karaka trees below the exotics, a heavy lift helicopter will be used.
5. Tauranga Domain Grandstand is having work undertaken to upgrade its seismic resilience and install a platform to enable media to safely undertake filming activities. Work is progressing well and is on-track to be completed by 27 May 2022, ahead of the NZ Black Ferns match at the venue on 6 June.
6. Construction has progressed on the Pyes Pa Connections cycleway project, with the concrete sections of the path in site 2 (Cheyne Road and Condor Drive link) being poured.



7. Work has commenced on the seismic strengthening of the Cargo Shed at Dive Crescent, as the first stage of an upgrade of the facility for community use.
8. Earthworks on the construction of the southern section of the Kopurererua Stream Realignment Project are expected to be completed ahead of schedule. The new stream channel has been created and instream features put in place. Two areas of preload have been established to facilitate the installation of two new cycle bridges in the 2022 construction season. Planning is now underway for the instream areas of the new alignment, starting in May.



9. A site has been confirmed for the Tauranga Destination Skatepark at the corner of Hull Road and Maunganui Road, opposite Mount New World. The site was selected using multi-criteria analysis; assessment of the risks and constraints of the site; and through consultation with the Tauranga skate community and Blake Park stakeholders. We are now working on designs with the design and build contractors, with construction on-track for 2023.
10. The Mount Beachside Holiday Park has seen occupancy and revenue increase in April, with the vaccine passes finishing, borders opening, Easter, school holidays and Anzac weekend all helping to increase occupancy by 3.4% and revenue by 26% compared to April 2021.
11. The Elder Housing Divestment documents are with Kainga Ora, signed by LINZ on the 14 April 2022. Tenants and neighbours were notified by mail-drop and a meeting of tenant village representatives took place on 4 May, in line with a joint media release on the sale agreement. Council also held tenant information sessions on 9-11 May. Kainga Ora, the Ministry of Social Development and the Tauranga City Council Project Team are meeting weekly throughout the next six months of the transition phase, with the transfer to Kainga Ora expected in November 2022.

12. Stage Two of the Elder Housing Tenant Moves are underway (10 – 25 May) to relocate 14 residents from Pitau & Hinau Elder Villages. Seven residents are being relocated by our staff to Tauranga Community Housing Trust, Bethlehem and seven residents are relocating within Council's Elder Housing portfolio. Five residents will remain at Hinau Village until vacant units are available in June.
13. A wide variety of renewals and minor capital projects are underway and/or have been recently completed by the Parks and Recreation team, including:
 - (a) Demolition of fire-affected public toilets at Coronation Park;
 - (b) Elder Village heat pump installs to meet Healthy Homes standards;
 - (c) Refreshed line-marking at both Whareroa Reserve & Gate Pa Reserve;
 - (d) Ground-levelling works at Soper Reserve are underway, to make the site flatter and more user-friendly for events;
 - (e) One of the boardwalks in Johnson Reserve has been renewed. This is one of the older boardwalks in the city and it was great to renew this heavily-used structure;
 - (f) A number of community planting days are being planned, including the Waitaha Community Care Group, Trees for Survival, the Kopurererua Rotary Trust, and the Welcome Day planting for new citizens;
 - (g) We removed a large dead pine tree on the embankment below Wharepai Domain. The tree was starting to pose a risk to the walkway and state highway below. With the aid of a large crane, the team was able to safely lift out large sections of the tree and process them on the reserve above. The last lift was a piece weighing approximately 6 tonnes.



Tree removal at Wharepai Domain.

27 JUNE 2022

1. Construction on the first stage of the Pyes Pa Connections Cycleway linking Cheyne Road to Condor Drive is now complete. Preconstruction planning is now underway on Stage two, which connects the stormwater reserve in Cheyne Road to the cycleway network.



2. The Mauao placemaking project is on track to deliver a new celestial compass as part of the Matariki celebrations. Work has been undertaken on the summit of Mauao to prepare the site for installation of the compass.



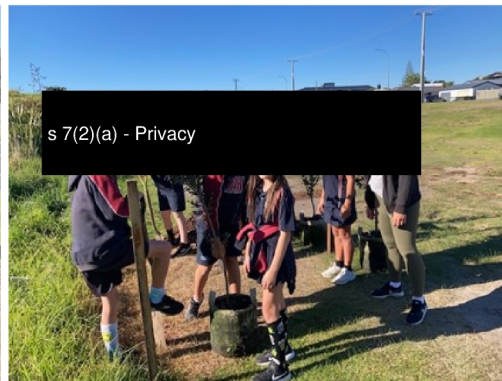
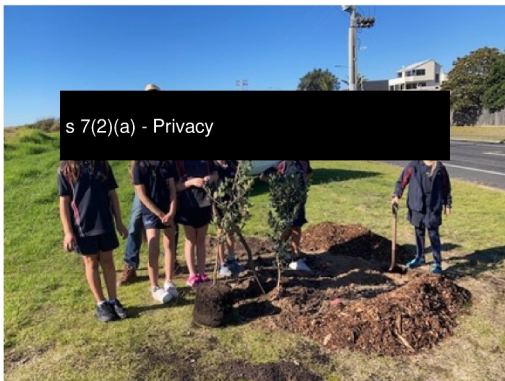
19. Fabrication of a new boardwalk and bridge structure to link Eden Crescent to Gordon Carmichael Reserve is well underway, with the structure on-track to be installed in late-June/early-July.



20. Work has progressed on the Te Ranga Landscape project, with a bund being constructed along the site boundary with State Highway 36. The bund will be planted as part of a community planting day in June. This is the first stage in a larger project to restore the reserve. Work will involve a Waharoa, Tomokanga, carpark, walkway and signage.



3. We continue to work on divestment of Council's Elder Housing portfolio. We have now moved the last tenants out of Pitau Road village and will start the demolition of the remaining blocks at Pitau Road next month. The remaining five tenants will be relocated from Hinau Village at the end of June, in preparation for the sales process of these two villages. With a total of 44 residents moved over the past year, it is great to see happy tenants and positive comments from tenants and their families. We are working with colleagues from across Council to transition the remaining seven villages to Kaingā Ora.
4. A wide variety of renewals and minor capital projects are underway and/or have been recently completed by the Spaces & Places team, including:
 - (a) Te Ara O Wairakei – Stage 2 Planting starts mid-June with 15,000 plants expected to go in the ground. Commissioner Tolley will open the works on 22 June by planting the first tree;
 - (b) On 13 May, Students of Te Akau Ki Papamoa Primary were joined by Dr Paul Salmon of the Skin Cancer Clinic to plant 80 Pohutukawa along Papamoa Beach Road. This will increase the biodiversity within the dunes and over time, these trees will provide shade for beach users;



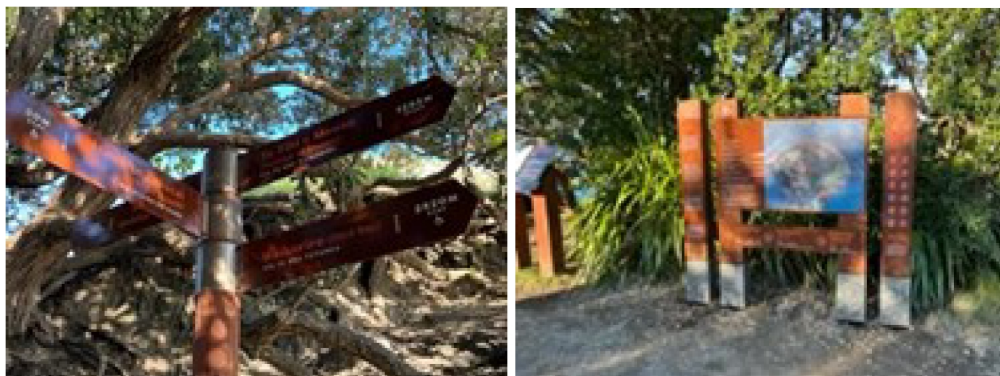
- (c) The planting season is in full-swing, with more than ten community planting events scheduled across the next three months. It is expected that ~50,000 plants will be planted by the community across Tauranga Moana this season.
- (d) Coast Care BOP will be holding 1-2 public planting days each month over winter, continuing their efforts to restore our beautiful dunes. For more information on Coast Care BOP's planting events, follow them on Facebook.
<https://www.facebook.com/CoastCareBayofPlenty>

15 AUGUST 2022

1. A new modular pump track was installed at Orangapani Reserve in The Lakes just before the school holidays. It is the biggest version of this modular pump track currently in Aotearoa and has proved a hit. Feedback received from one local: *“This is amazing and thank you so much I know a lot of very excited parents and kids looking forward to using Orangapani Reserve in the future!”*



2. A 3x3 basketball court, barbecue area and seating will also be added at this reserve in August, with other amenity improvements around The Lakes scheduled over the coming months.
3. A pop-up park was installed on the site of 90 Devonport Road, to activate the site until construction work is due to commence. The work involved the creation of a football pitch, table tennis table, seating and planting.
4. On Mauao, 18 large exotic trees were removed from sensitive archaeological terraces using a heavy lift helicopter. During this operation, 171 lifts were completed with a total combined weight of 286 tonnes removed. As part of the ongoing restoration of Mauao, 6,600 native plants have been planted this season. The latest phase of the Mauao Placemaking project was completed in July, with upgraded wayfinding signage installed in key locations.



5. The planting events this winter have been very successful to-date, with a great turn-out of volunteers. The ongoing support of our volunteers is very much appreciated - they make an important contribution to our community reserves.
 - (a) *Gordon Carmichael Reserve* - 22 students from Mount Maunganui College spent four hours in the reserves planting 1,250 wetland plants. A Planting Day for new citizens is programmed for October.
 - (b) *Sydenham Botanical Park* - 17 June was Arbor Day and the Natural Environment Team celebrated with the 10 volunteers planting 300 new plants and enjoying a BBQ!

- (c) *Waioraka Care Group* - Supported by Welcome Bay School, neighbourhood volunteers and BOPRC spent six hours planting 2000 wetland plants as part of a wetland restoration at Waioraka Reserve.
- (d) *Kopurererua Valley* - Tauranga Rotary Centennial Trust, with about 40 volunteers, planted 1,700 plants as the wetland development of valley continues. Within the capital development works of the Kopurererua River realignment, a further 33,000 plants will be planted as stage one winter works are completed.
- (e) The continued restoration for back dunes along the coastal reserve has seen 10,000 plants planted over the last two months. Total numbers of plants in the ground to-date - 55,000.



- 6. Five new en-suite cabins installed at the holiday park are a great addition and have proven popular over the winter months, with occupancy at 74%. We have also commenced our renewal programme with kerb and channelling/roading and levelling of sites at the park. These sites should be available for Labour Weekend.

5 SEPTEMBER 2022

- 1. Work has progressed on the Marine Parade Walkway development, with some key project milestones achieved. Three strong tenders have been received to undertake the construction of the walkway. The tender process will be completed and contractor ready to establish on site towards the end of the calendar year. Physical work, including BBQ's and picnic table seating that does not need resource consent, is anticipated to commence in October.
- 2. Installation of the basketball court at Orangapani Reserve in The Lakes, to complement the pump track, will be completed this month. A community celebration is planned for this project on 17 September 2022.
- 3. Work has commenced on the upgrade of the Fire Station at the Historic Village. When completed, this space will be used as a resident carving studio. The work will be completed by the end of August.
- 4. The digital kiosk on Wharf St was opened with a blessing on 9 August. In attendance were representatives from Ngāi Tamarāwaho, Ngāti Tapu and Ngāi Tukairangi, and Commissioners Anne Tolley and Shadrach Rolleston, along with others involved with the project. The digital kiosk tells the stories of Te Papa, starting with the arrival of Māori through to the present day, and provides context to the statement 'Te rau o te patu' that has been etched into the pavement at either ends of the street. Te rau o te patu refers to the surrendering of arms that occurred in the vicinity of Wharf Street and the subsequent confiscations of Māori land that took place. The storytelling project was

influenced by mana whenua and had significant drive from kaumatua Peri Kohu, who sadly had not long passed away.

5. An exciting new ecological restoration has started, in collaboration with Ngāi Tamarāwaho, behind the Judea sports fields below Winiata Street. Named this the Winiata Gully Restoration Project, the area we are starting with is just under a hectare. Part of the area is zoned conservation, with the remaining portion Active Open Space. The removal of a vigorous weed cover is the first step. When complete, it will be planted in lowland coastal forest species indigenous to the Waikareao environs.
6. Minor repairs to The Strand seawall have now been completed and works to replace the seawall have been transferred to the Civic Centre Project Team, in conjunction with the wider Marine projects.
7. The Strand Mooring Holders Carpark has been resealed and is ready for lease and mooring holders to use again.

3 OCTOBER 2022

Tauranga Domain Grandstand project

1. To allow the televising of sporting events at the Wharepai Domain, Council needed to construct a broadcasting facility. The seismic grading of the grandstand meant that the platform needed to be a stand-alone structure and could not form part of the grandstand structure.
2. The LTP budget to do this work was \$433k. The final cost to undertake the physical works was \$1.04m. One increase of budget was approved by staff, under delegation to increase the budget to \$899k. However, given that the final cost is \$603k above the LTP budget, a Council resolution is required.
3. The variations reflected the unforeseen remedial works that needed to be undertaken to bring the building up to a safe and compliant standard, most of which were only exposed once work commenced. This included asbestos removal, re-routing cabling, replacing non-compliant sub-mains, remedial works on structural steel columns, relocating services, new flashings to soffits, electrical works to changing rooms, compliance to fire requirements, etc.





12 DECEMBER 2022

1. Eden Crescent Connection - The bridge and boardwalk structure installation, as part of the Eden Crescent Connection project, will be completed in December. Finishing touches are being completed onsite, with reinstatement and final installation of the cultural art elements also expected to be completed this month. An Iwi blessing is planned for early-2023, with a small opening ceremony to acknowledge the contribution some of the surrounding schools have made to the cultural artworks.



2. Fire Station (The Historic Village) - The Fire Station building has been extensively renewed, including a new roof and flashings, new internal wall linings, new lighting, refurbished entrance doors and improved external drainage. The improvements provide a much better working environment for the tenant and extend the asset life for one of the Village's iconic buildings. The building is currently being used as an artist's studio.



3. Coronation Park Toilets - The toilets from Masonic Park in Tauranga were uplifted and transported to Coronation Park. The toilets were then refurbished and connected to local infrastructure to replace the existing Coronation Park toilets, which were damaged in a

fire in January. A collective effort from the property, project and parks operational teams saw this work completed in time for the arrival of the first cruise ships of the summer season.

4. Marine Parade Walkway - A significant milestone was reached for the Marine Parade Walkway project with a blessing held at Te Ngaio Reserve on Tuesday, 15 November. Local mana whenua Ngāi Tūkairangi and Ngāti Kuku met commissioners, council staff, contractors, and key stakeholders to bless the commencement of the delivery phase of the project. The first works will be the installation of a small play area, which is anticipated to be completed before Christmas. The construction of the path will commence in January, with completion envisaged in the middle of 2023.



5. New Accessibility Changing Facility at Mount Drury – The city’s first accessibility changing facility was opened at Mount Drury recently. The facility is equipped with a hot shower, a height-adjustable sink, toilet, an adult changing table, and a hoist to help with lifting. The facility doors are automated, with voice guidance to inform users of doors opening and closing. Special attention was given to the design of the decals incorporating the fauna and flora of the area.



New trees planted at Maunganui Road – Fifteen new trees have been planted along Maunganui Road, as part of the road upgrade. Successfully transplanting trees of this size, then having them establish themselves in their new environment, does pose a number of challenges. A further eight trees will be planted in the next stages of the Maunganui Road project.

6. Pine felling Omanawa Falls - Contractors working on the Omanawa Falls project identified a high-risk pine tree sitting precariously on the edge of a cliff-face. The tree was highly likely to fail, placing significant infrastructure at risk, including the Omanawa power station. Removing the tree posed quite a few challenges due to the unstable nature of the cliff-face and normal removal methods such as rigging or sectional felling were ruled out. Paul Kenny Contracting had to use abseil access methods to reach the tree and then expertly felled it in a way that avoided all of the infrastructure below.



Positive Feedback

- (a) After receiving feedback on concerns about damage along sections of Papamoa Beach Road, as well as drug dealing, fly-tipping, and general anti-social behaviour, two sections of Papamoa Beach Reserve have been fenced off and had turf renovations carried out. These areas are recovering well and are now functioning as vehicle-free areas for users. Feedback from neighbours and the wider community has been positive. We will look to add furniture and other reserve amenities in the future.
 - (b) Mowing of the Rangataua and Judea Sports Clubs fields has started. The feedback thus far has been positive, and it is good to be building stronger relationships with these long-standing clubs.
7. Mount Beachside Holiday Park - The kerb and channelling project at the park is almost complete, with just site spray mark numbering to be finished. The photo below shows two of the five ensuite cabins that have been in use since June. In the period 24 June-20 November, 1,408 guests have stayed in the cabins. Occupancy is 82.6% for that period and the next available weekend booking is in March 2023.



27 FEBRUARY 2023

1. Marine Parade Coastal Path - The play area opposite Te Ngaio Reserve was completed and opened for use just before the Christmas holidays. One distinctive feature of the new play area is a driftwood log transported from further along the beach, which is now installed as a unique climbing feature. Planting along the edge of the play area will occur when the main path is installed later in the year and will further enhance its natural integration into the dunes. The new pedestrian crossing to provide a safer road crossing is expected to be completed shortly.



New Natural Play Area at Te Ngaio Reserve

2. *Ila Park Upgrade* – Work is progressing well at Ila Park, despite the challenging summer weather conditions. Wet pour under-surfacing is well underway, and completion is anticipated by the end of February.



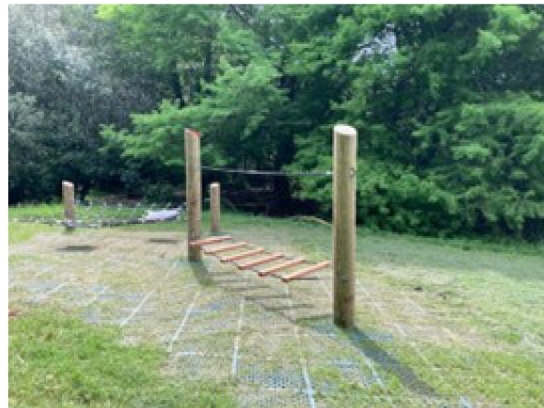
Wet Pour under Flying Fox at Ila Park

3. *The Men's Shed, Historic Village* – Work has commenced on stripping and replacing the existing building's asbestos cladding. Sabre Construction is undertaking this work and will also be undertaking renewal works on Building 6 (Big Red Shed), 22 (The School House), and 35A & 35B (Nissan Huts) in the coming months.
4. *Kopurererua Valley Stream Realignment* – This project is tracking well, with the rain and flooding in the valley having a minimal impact. Two significant milestones expected to be delivered in February:
 - (a) The bridges will be lifted into position within the southern alignment (see picture below)
 - (b) The “Livening of the stream”, a major milestone for iwi and Tauranga City Council, will be taking place on 21 February, marking 70% completion of the project.



New Pedestrian Bridges arriving at site and ready for installation

5. *Welcome Bay Amenity Improvements* – the following work has been completed as part of the Welcome Bay Amenity Improvement Project:
 - (a) Waipuna Park – Installation of a new Basketball court, new shared pathway and boardwalk, upgrade to existing playground, accessibility upgrades to the existing playground, new picnic facilities, new bench seats and bike racks
 - (b) Johnson Reserve – new natural play area installed
 - (c) Oteki Reserve – new swing set installed.



6. *Walkways* – Recent weather events have put pressure on all services, including walkways. The team has worked hard in an attempt to keep tracks open and clear. Customer feedback is higher than normal, and as would be expected, the issues are directly-related to high wind and rainfall. We have bolstered the team to help get to repairs as quickly as possible.
7. McLaren Falls has experienced large weather bombs, with extensive damage to existing facilities and new damage resulting in the wider park being closed until safety assessments can be undertaken.
8. *Cemeteries* – the team has taken back maintenance of the city cemeteries and is providing a higher level of service with the additional resources they now have.

3 APRIL 2023

1. Gordon Carmichael Reserve Connections: Work on the Eden Crescent bridge/boardwalk connection into Gordon Carmichael Reserve is now complete and is

being well-used by residents. After some delay due to the recent bad weather, work is now progressing at the Gordon Carmichael Road Connection, with the retaining wall now complete and installation of the remaining shared walkway well-underway.



2. Destination Skatepark: Fencing has been erected around the site and arborists have commenced work to remove or relocate trees (some will be relocated onsite, with the rest going to Porotakataka and Blake Park). Enabling works are planned to start in early-April, with GT Civil undertaking earthworks, completing water and sewerage connections and installing soakage cells. They will be followed by AMC (Angus MacMillan Concrete) constructing the skate features.



3. Marine Parade Coastal Path: Work has commenced on the construction of the Coastal Path from the Cenotaph, with the project team working down Marine Parade. The intent is to be clear of this area prior to the ANZAC day commemorations.
4. The Kopurererua Stream Realignment project reach two major milestones recently.
 - The ceremony for the livening of the new stream alignment was celebrated this month, with the project partners attending a morning blessing before the new stream alignment was “unplugged”. Commissioners, Regional Councillors, hapū members, contractors and staff all enjoyed this amazing milestone for the project.



- De-fishing of the old Kopurererua Stream alignment: Tonkin and Taylor, hapū members and Council staff have been working to remove aquatic life from the old stream before infill works commence.
 - 1,200 individual native fish, including long and short finned eels, red bullies, giant bullies, common bullies, inanga, koura and shrimp, have been removed and relocated to the new stream.



5. Cyclone Gabrielle was a significant event for the city, with extreme winds causing some damage to the urban forest.

The Avenues and Welcome Bay areas were the most affected and unfortunately, we did lose some significant trees. The largest tree lost was a huge poplar at Yatton Park, which fell during the night of the storm.

Since the event, contractors and staff have worked to clean-up the damage, inspect trees, identify hazards, and prioritise their importance. This has involved a huge effort, with the work involved done efficiently and safely by a number of contractors.

We still have a few large sites to attend to. These have been made safe and we are now planning the tidy-up work.



6. Renovation works have been ongoing this month to repair damage caused by the One Love and Summer Haze/Lab concerts on Wharepai Domain. Work has been hampered by ongoing wet weather.

Updates are as follows:

- Tauranga Domain Cricket/Rugby blocks - Soil has been brought onsite and levelling has been completed to the damaged areas, to bring the Domain back to pre-concert conditions. The site has now been seeded and irrigation is in place to promote new turf growth;

- Tauranga Domain #1 – In between a busy athletics programme, the contractor has managed to truck and spread sand onto the damaged areas ready for planned seeding;
- Wharepai Domain - The event-affected areas have been levelled and seeded, new grass growth is well-established and daily watering is in place.

Both of these sites are being monitored by our contractor, to look-after seed strike rates and water usage.

7. Mt Beachside Holiday Park: As part of our sustainability focus, we are expanding our grid- connected solar electricity system at the Holiday Park. Currently we have a 3.8kWp system, which will be increased to a 13.04kWp system, providing an estimated output of 17,754kWh per year. The installation is planned for 20 March.

19 JUNE 2023

1. Construction of the Marine Parade Coastal Path has progressed well, with approximately 540m of concrete laid by the construction team. Work will commence in the next month on the boardwalk sections located in some of the more environmentally sensitive project areas.



2. Work commenced in May on the construction of the Papamoa Shared Path. The path creates a connection from the Papamoa Domain to Taylors Reserve and will formalise some of the key access points along this stretch of coastal reserve.
3. As part of the Mauao Placemaking project delivery, work for the next Matariki celebration on Mauao is well-advanced. Work includes installation of the final bundle of signage, stone sculptures installed at significant points of interest, seating installation, and the completion of the compass on the summit.



Base to complete Summit Compass

New Sculptures to be installed

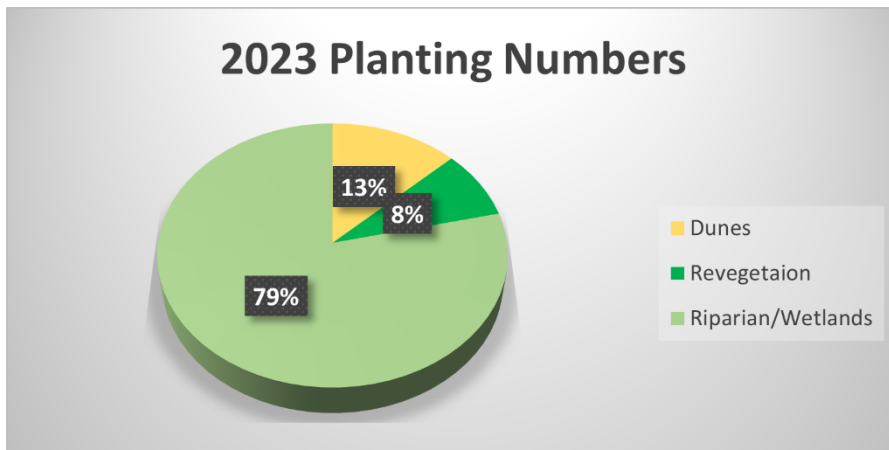
Final bundle of signage

4. A new toilet block has been installed at Waterford Domain in Papamoa. This adds additional amenity to the local neighbourhood reserve, which currently has a large open green space and playground.



New toilet block installed, and with wrap applied

5. The Pyes Pa Connections project progressed with the installation of the connection from Te Otinga Place to Cheyne Road. This project connects the network of stormwater reserves that runs through Pyes Pa.
6. Planting has started across the city. Weather conditions have been great for planting but not site preparation. Contractors are doing their best with the fine days that they get. This programme includes:
 - 16,490 plants going into vegetation sites across the area
 - 25,440 plants across the dunes system
 - 14,650 plants into Wairakei Stages 4/5
 - 140,000 riparian plants in the Kopurererua Stream realignment.



7. *Pest Animal Control*
 - We have had many notifications of rats in reserves and on private property across the city. Our contractors have been out over the last month completing a bait pulsing regime and have noticed a very high take, which is good. This has led to many rats being more active during the daytime, hence more public sightings.
 - Our night shooting has been put on pause for more monitoring as rabbit and pigeon populations have dropped.
 - New larger bait stations are to be deployed across the city once our new pest animal control contract has been renewed with contractors.
8. *Dunes and Marine Parade*
 - Lots of action across this area with the new boardwalk under construction at Marine Parade and the new pathway at Papamoa.
 - We have trialled a large-scale drone capable of carrying 40L of agri-chemical spray. An amazing machine that will cut down on man hours, plant damage caused by staff walking through vegetation and reduce health and safety issues relating to

accessing tricky sites across the city. The drone can spray a hectare and a half in an hour and will be used for inaccessible areas across the city.

9. Mauao - recent pulse pest control showed no rats on the maunga. This is aiding in the increase of biodiversity across the area. Capping of the lower summit to protect archaeology has taken place in preparation for a future project there. The new signage is looking great and helps tell the stories/history of Mauao.
10. Cyclone Gabrielle affected the urban forest across a wide area of the city. During this major event, there were multiple call-outs to clear debris from pathways and footpaths. these areas were cleared efficiently, even in some very trying conditions. Post-cyclone our teams were extremely busy tidying up the many walkways, and clearing 'hangers' and unstable trees and mess from fallen trees or tree parts. Some of the more significant areas of clean-up were along Devonport Road, where a large poplar fell across the road; along Cameron Road, where a large tree fell within a protected tree group; and at Tutarawānanga – Yatton Park, where one of the largest trees in the city succumbed to the wind.
11. Maunganui Road saw the addition of more large grade trees in the centre berm. These large trees have made an instant impact and have really enhanced the amenity of this area.
12. Tree planting is part of our BAU, but this year we have significantly upped the number of enhancement plantings to help work towards increasing the canopy cover across the city. 1,400 new specimen trees will add to the city tree canopy this year.
13. With the handover of the Mount/Papamoa TC40/17 Maintenance contract to the new City Operations unit fast approaching, a concerted effort was made over the last few months, in conjunction with the incumbent contractor, to have contract assets in specification, ready for handover and a smooth transition in July.
14. Tauranga Domain renovation - One Love renovation work began in early-February and work was completed to schedule in April. REC Services managed to have the #2 field ready for use on 15 April, and the Domain #1 was available the following week.



Before 31 January



Completed renovation

15. *McLaren Falls Park*

- The road slump repairs above the power station has now been completed. This now provides better stability and allows access for the larger machinery and vehicles which are required for both park management and Manawa Energy.
- The park experienced further damage on top of the Anniversary Weekend and Cyclone events, with new slips encountered at the end of the waterfall track and at the base of the nikau track. This has resulted in full and partial closures of a number of tracks while we assess repair needs and work through next steps.

16. Cemeteries

- The Cemetery staff continue to make significant progress with improvements to city cemeteries since taking over the maintenance of these amenities from contractors earlier in this year. Staff have implemented a higher specification than the contractor, with further maintenance and spraying to make the city cemeteries more presentable. A number of compliments have been received about these improvements.
- The demand for ash gardens has been increasing, and the installation of a further rows behind the Tui Lounge will help cater for this demand.
- Cemetery staff attended the cemeteries conference in Wellington, which had a focus on natural burials. We do not currently provide this option, but this is something that needs serious consideration. Staff are working through the information gathered.

17. *Mount Beachside Holiday Park* - Two more family cabins have arrived and are being setup on sites P1 & P2, with furniture being installed. Both cabins have great views of the ocean from their decks. The blessing took place and the cabins were available for King's Birthday weekend.

14 AUGUST 2023

1. Work on the *Gordon Spratt Skatepark* is nearing completion, with the final concrete pours being undertaken. The local skating community has been involved with the development and build of the skatepark, working with construction contractors to ensure the finer details of the park will work for users. It is anticipated that construction will be completed at the end of August and plans are underway for a community celebration in September.



Gordon Spratt Skatepark Under Construction
constructors



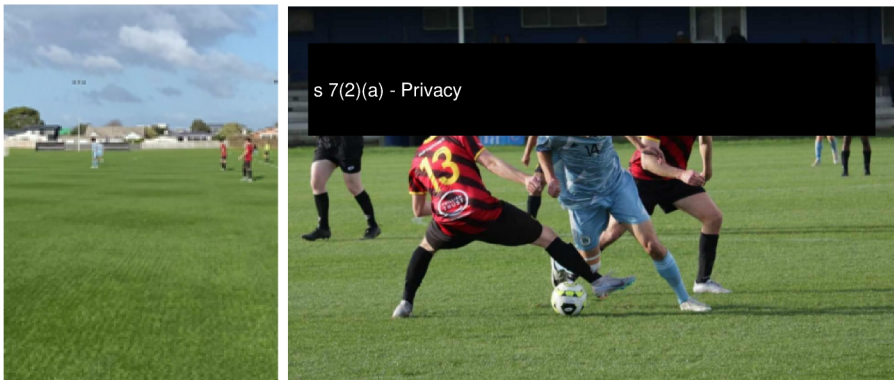
Local Skaters Dan and Garth advising skatepark

2. The next phase of construction is underway at the *Destination Skatepark* with the skatepark constructor AMC, establishing onsite. In the coming months, the community will see the shape of the skatepark starting to appear, with the flow bowl currently under construction.
3. Work was completed in advance of Matariki celebrations on Mauao as part of the *Mauao Placemaking* project. Work included installation of the final bundle of signage, stone sculptures installed at significant points of interest, and seating installation. The celestial compass was also completed, with the outer rings installed. The outer rings have been designed to complement the central plinth which now completes the summit feature.



Celestial Compass installation was completed on the summit of Mauao, in time for Matariki.

4. Last summer, the *sports fields at Links Avenue Reserve* were upgraded with the addition of sand slit drainage and a sand carpet, combined with the growing-in of a more resilient and drought-resistant couch turf cover. The unseasonably wet summer resulted in delays to the earthworks and by the time it came to planting the turf, the anticipated summer heat was already fading. We have worked with the contractor and a very patient Tauranga AFC to get the best possible outcome throughout this work programme. The first game, a Northern League fixture against Ellerslie AFC, was played on the new surface on 14 July, Matariki Day, with great feedback received from players and spectators.



5. Work is progressing on the *Papamoa Shared Path* construction, with construction teams working east from Papamoa Domain to Alexander Place, and west from Alexander Place towards Parton Road. Concrete rest areas at Allan Place and Douglas Place have been poured and sections of inground timber boardwalk under existing Pohutukawa trees have been installed.



Construction progress on the Papamoa Shared Path.

6. The second stage of the *Pyes Pa Connections* project has been completed. This stage saw the creation of the connection from Te Otinga Place to Cheyne Road, linking to stage one, which provided a connection from Cheyne Road to Condor Drive.



New pathway connection from Te Otinga Place to Cheyne Road.

7. The first 1km of the *Marine Parade Coastal Path* has been completed, with the construction team's focus now moving onto the construction of the timber boardwalk sections through the dune environment. The construction work is proceeding well and is currently on schedule to open this summer.



Timber section by Cenotaph.



Work on Marine Parade.

6 NOVEMBER 2023

1. Work has been completed on the remediation of a number of slips at McLaren Falls Park which resulted from the storms earlier in 2023. The work included installation of retaining and stabilisation of the slips; and reconstruction of the road network.



2. Maunganui Road Reserve – with support from the Urban Forest team, the scheduled improvements to Maunganui Road Reserve that have taken place over the last year are now complete. The reserve is located between the Mount Maunganui Library and Zespri on Maunganui Road. Bespoke seating with shade has been installed, and this space is a great nook that can be used for social gatherings, or as a storytelling area for the adjacent kindergarten and library. It can also be reconfigured to use as a small performance space (by request to the events team). In October 2022, gardens were created and four large pohutukawa were transplanted with the blessing of local hapu and with assistance from Zespri volunteers. This month, four large nikau have been planted to add to the ambience of the reserve.



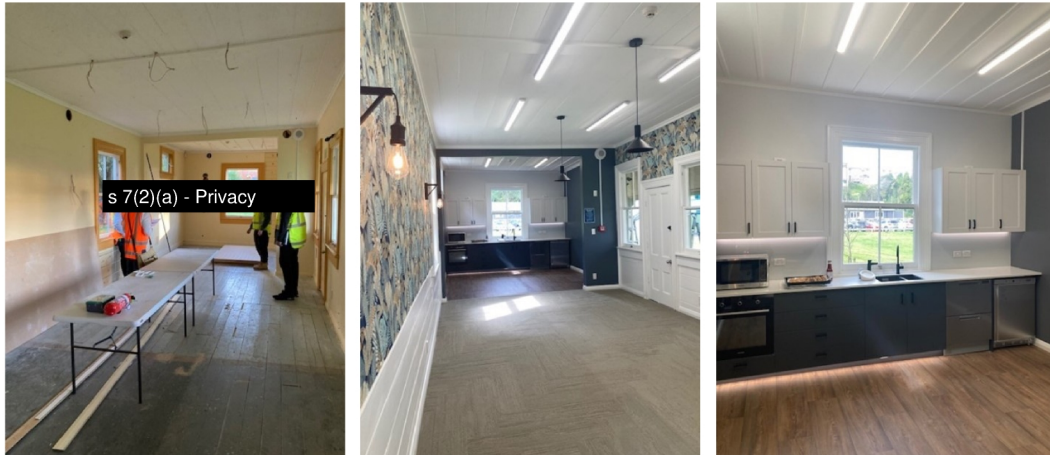
3. The upgraded Gordon Spratt Skatepark was opened to the public in September. The park has proven extremely popular and is packed with children most weekends and during the school holidays.



4. The Papamoa Pathway was opened to the public in September. The 3km shared pathway links Papamoa Domain to the Parton Road beach accessway. Community feedback has been positive and the path is already well-utilised.



5. Building 64, known as Durham Barracks and located at The Village Green in the Historic Village, has recently undergone an interior fit-out and is now ready to join the portfolio of venues offered by the Venues and Events team for meetings and events. While the exterior of the building was renewed in 2019, the interior required substantial improvements. The fit-out now includes a self-contained kitchenette, fresh paint, upgraded lighting, new carpets and vibrant wallpaper. A small project, but a huge transformation into a desirable function/meeting space for the Village team.



6. Golf Road - Downer has been awarded the contract for the civil works to be undertaken at 64 Golf Road. The scope of work to be undertaken includes the formation of a new car park, associated infrastructure, and the importation of fill onto one of the former bowling greens to set the foundation for the new playcentre to be developed on the site. The site was handed over to Downer on 6 September. Work is scheduled to be completed in November and the site will then be handed over to the Mount Maunganui Playcentre, so that the construction of the new playcentre can commence. The new building is tentatively scheduled to open in April 2024. The blessing for the project was held on 6 September and the Mount Playcentre Tamariki provided the waiata and karakia, marking a positive and inclusive start to the project.

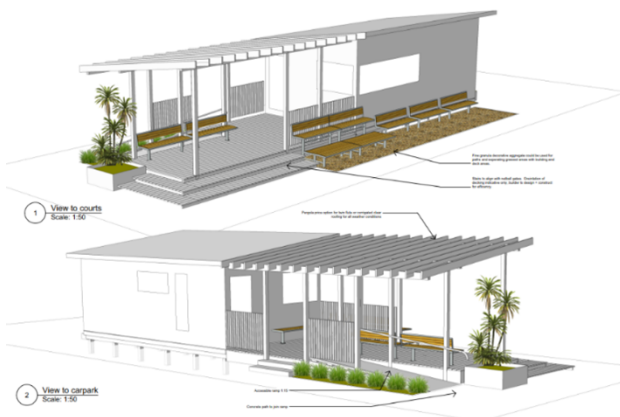


11 DECEMBER 2023

1. The installation of a set of new cricket nets has been completed at Waipuna Reserve in time for the summer season. Installation of the nets is part of an ongoing investment in sporting facilities across Tauranga.



- The design of a new netball shelter at Gordon Spratt Reserve has been confirmed. This is a prefabricated building which is being manufactured offsite for installation at the reserve. Installation is anticipated late-January.



- It was great to see the public enjoying the fresh sand slopes at Waikorire/Pilot Bay over the weekend. This sand, repurposed from our routine deep water dredging operations, serves a dual purpose: guaranteeing the safety of our shipping channels while contributing to the rejuvenation of beaches citywide. Rigorous quality assessments precede the deposition of this sand, ensuring its adherence to public health standards.



- Construction has commenced on a new deck structure Mauao at Awaiti, on the northern face of Mauao, as part of the placemaking programme of work. This work is progressing well and is expected to be completed before the end of November. This project has received a \$150k funding grant from the Port of Tauranga. Visitors to Mauao this summer can expect several other features to be completed by Christmas, including sculptures, a feature seating area on the lower summit and the shaping of a natural amphitheatre near the water tank.



5. Good progress is being made on the construction of the Destination Skate Park, with the project on track for April 2024 completion. The project team has been successful in obtaining additional external funding for construction zones 3 & 4 and completion of the design scheme.



6. In the CBD, work has begun in conjunction with the City Centre team on the first of several placemaking/activation projects at Grey Street. Initial work involved the removal of the Palms in this location. Work will follow on some streetscape enhancements to give an impression of what the enhanced city centre will look like in the future.



7. Building 62 at The Historic Village, known as Colonel Greer's Cottage, has undergone an interior fitout, including new electrical circuits and lighting, completing the final phase to bring this building into use. A designated Green Room workspace features three workstations, a heat pump, Wi-Fi, radio charging stations, a wet area for wet weather gear, and comfortable amenities for event organisers hosting community festivals on the Village Green. The space is available for hire as part of The Village Green, or as a separate space if The Village Green is not in use.



8. As part of the Pāpāmoa Shared Path project, work has begun (in conjunction with the Transportation team) on the installation of raised pedestrian crossing tables to assist users to safely cross Domain Road.
9. Construction on the Marine Parade Coastal Path is progressing, with the section from the Cenotaph to Hart Street being completed prior to Christmas. Construction of the section from Hart Street to Tweed Street will be completed in February.



12 FEBRUARY 2024

1. Large scale earthworks have been undertaken at Gordon Spratt Reserve to upgrade the sportsfields. Work has involved upgrading 4 ha. of soil profile, installing irrigation, and growing a couch grass surface.



2. As part of the Kopurererua Valley Stream realignment project, the new cycleways have been chip sealed to make it easier to cycle or push prams through the reserve and admire the picturesque views of the new river alignment and native fauna and flora. This marks 85% of project completion and we expect the northern alignment to be completed and stream livening to be undertaken in April/May.



3. At Caslani Reserve in The Lakes, one of the redundant pergolas has been removed and the remaining two have been repurposed with shade and two monster picnic tables, one of which is accessible. A new barbecue has been installed adjacent to new picnic area, with new concrete connections throughout.



4. An upgrading programme has been undertaken at Tutarawananga/Yatton Park. The pathway under the trees at the eastern end of the reserve has a new asphalt layer and provides new connections to the track leading to the Waimapu Estuary walkway. A new accessible concrete path connects the main driveway to the barbecue, toilet and play area. The main driveway and parking area has also been resurfaced and includes two disabled parking bays and a raised entrance crossing. At the main entrance, a new sign has been installed to reflect the dual naming of park.



5. The end of 2023 saw the completion of a number of projects as part of the delivery of the Mauao Placemaking project. In the last quarter of 2023, the following work was completed:
 - Awaiti viewing platform - Te Awaiti is the name for the small stretch of water between Mauao and the large ocean side rock formation - creating a small river of sea water in close proximity to Te Toka a Tirikawa. The sheltered nature of this strip of water lent

itself to the short-term anchoring of Waka. The elevated deck structure was completed before Christmas and captures a vista of these features. The seating on the deck provides a rest point for users of the base track. The Port of Tauranga contributed funding to the platform construction, and this was opened before the Christmas break for users of Mauao to enjoy.



- Lower Summit (northern landing) - The lower summit signifies the area of Mai i Ngā Kuri a Whārei Ki Tihirau – the land formation and coastline of this region from Bowentown to the East Cape. The name denotes the coastline’s significance and encapsulates all Iwi that affiliate to Mauao. The curved seating is designed to orientate Mauao and its viewers to this wider environmental context.

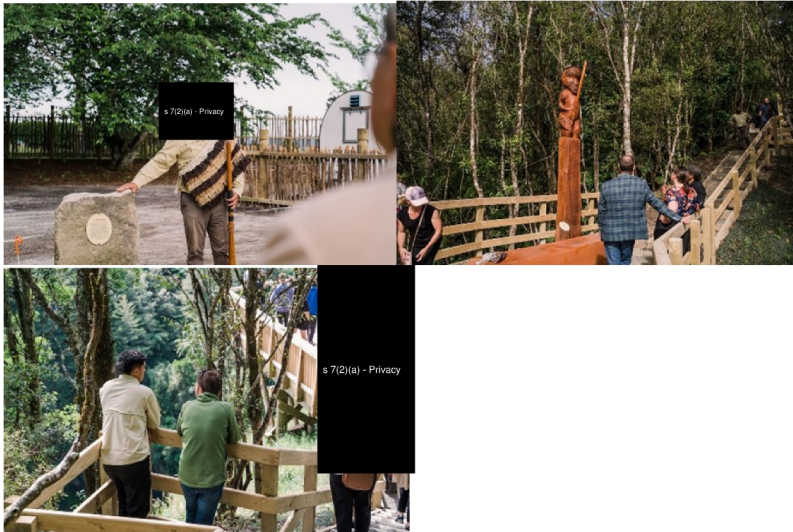


- Waipatukakahu – The Waipatukakahu project follows the revitalisation and beautification which restores the mauri (life force) of the stream. This includes interpretation signage highlighting the story and restoration of rocks from other areas of Mauao to formalise and protect the stream. A seat has been installed to appreciate the area and act as a rest stop for those using the base track.



- Hukitawatawa (amphitheatre by water tank) - This area has been shaped to create an amphitheatre feature, providing a useful area for seating larger groups of people. The area will remain closed over summer while grass establishes.

6. Te Rere Omanawa was officially opened to the public in early-December with a blessing onsite to mark the completion of the track work. This is a significant milestone, providing the community with the ability to view the falls safely.



7. December was a busy month at the Mount Beachside Holiday Park, setting a new revenue record of \$416,912, up 11% compared to December 2022. Occupancy for December was 10,388, also up 11% compared to December 2022.
8. Spaces & Places engagement staff teamed-up with Sport BOP and our Property Management team to successfully organise and deliver a series of events to inform user groups of the LTP. These sessions were crucial in keeping our sports field and leasing stakeholders in the loop about proposed changes, and gathering feedback.
9. The Marine Parade Walkway was opened with a blessing and public event in December, in time for the holiday break. Many compliments were received over the break from walkway users. The walkway has seen the activation of the entire coastal fringe from Mount Drury right along Ocean Beach Road, with the coast being easier to access for a wide range of community members.



18 MARCH 2024

1. Our Urban Forest team had its application for Tauranga to be recognised in the 2023 Tree Cities of the World accepted by the Arbor Day Foundation. The Arbor Day Foundation is part of the Food and Agriculture Organization of the United Nations (FAO) and this initiative is an international effort to recognise cities and towns committed to ensuring that their urban forests and trees are properly maintained, sustainably managed, and are duly celebrated. To be recognised as a Tree City, a community must meet five core standards that illustrate a commitment to caring for its trees and forest – Tauranga is now only one of four New Zealand cities that have this recognition.
2. On 27 February, the Urban Forest team celebrated the launch of Rakau, the new Tree Asset Management application for managing the city's urban forest.

The application replaces the previous tree app, which was out-of-date and no longer fit-for-purpose. The new app is based on the work done to support City Operations with a field solution for the new business unit. The Urban Forest team has worked hard alongside Council Platform managers to develop an application which works in the field and with Council asset systems. This new application will give the team more clarity about the quality of the city's tree asset, reducing risk and making the team more agile. Additionally, data captured in the app will support decision-making around the development of tree canopy across the city, meeting actions under the Nature and Biodiversity Action & Investment Plan (AIP).

3. Tutarawānanga-Yatton park (Destination Park) gardens rejuvenation, featuring a blend of cottage/native gardens and tree arboretum, a new sealed walkway, and upgraded BBQ and shade areas has sparked positive feedback from the community.
4. Mount Maunganui Holiday Park has retained the 4-star plus rating for the property and achieved the Gold Sustainable Tourism Business Award. A Gold Award recognises the best sustainable tourism businesses in New Zealand. The park has also had a bumper summer season, with visitor numbers up 8.5% (1,914) on the previous year. Over December and January, the park hosted more than 24,000 visitors.
5. We recently completed the installation of athletics throwing circles at Gordon Spratt Reserve. In partnership with the Papamoa Athletics Club, which has more than 300 members ranging from 3 to 14 years old, we co-funded the renewal of two shotput circles and one discus circle with safety cage. The work was well-received by the Athletic community, with s 7(2)(a) - Privacy and s 7(2)(a) - Privacy turning up to try out the new equipment and impressing the children. Build it and they will come!
6. The Natural Environment team recently spent the morning talking with Toi Ohomai students undertaking Certificate in Conservation (operations) study. As all three Council representatives completed the same course, this was a valuable chance to connect with the institute and students about where their learning and experiences can take them. The team is looking to partner with Toi Ohomai to provide these students with first-hand experience in several current and future projects.

29 APRIL 2024 – note: content is under review still and won't be finalised until early next week

1. Destination Skatepark – Work has progressed well on the Destination Skatepark, with construction nearing completion. Work in March has included the completion of the concrete pours for the skatepark, installation of a new toilet block, commencement of work on the rail crossing upgrade, and installation of shade, BBQs and water fountains. Transportation has commenced the Maunganui Road upgrade, which sees the installation of a shared path and an upgraded intersection at Tweed Street.



2. The team is currently undertaking large-scale refurbishment of the eight pou at Gate Pa, along with the Whareroa (entrance way), the upper deck, repairs to the flagpole and fencing. This work is almost complete and will be ready for unveiling on 29 April, which is the anniversary of the Battle of Gate Pa. This project involved extensive hapu and the community engagement and all involved are happy with the result.
3. In March, we installed three sculptures on Mauao using a Black Hawk helicopter. Each sculpture represents different themes and weighs around two tonnes. This is part of the wider work over the past 18 months where many cultural touchpoints have been added to the maunga, including wayfinding and interpretation signage which shares the ecological significance and cultural narrative of Mauao. The project also included new seating which provides an opportunity for our community to reflect and connect with the Mount. We also completed renewal work that included widening multiple sets of steps, installing drainage, edging along the whole track, handrail/barriers on the steep stairs, and applying a new aggregate surface.
4. The war memorial features at Memorial Park have recently received a deep clean and seal by specialist contractor Elevate Sealing Solutions, which is certified to deliver specialist cleaning and sealing treatments to masonry components, notably Hinuera stone. The process involves using specialised chemicals and cleaning methods to remove embedded foreign particles and mould that have built-up over decades, and is vastly superior to water blasting. These items are now sealed, meaning undesirable particles and organic growth will be easy to remove, cutting-down on future maintenance costs.





5. The Elizabeth Street Streetscape upgrade project was opened to the public with a blessing prior to Easter weekend. This sees the conclusion of the construction phase of this project. The response from the public and business owners since the opening has been extremely positive and it is good to see both Elizabeth Street and the laneway being well-used by the public.



Elizabeth Street in 2018 prior to upgrade.



New Elizabeth Street Streetscape 2024.



Mauri Stone Blessing.

6. Waterford Park Papamoa – As part of our ongoing programme of improvements across the neighbourhood reserve network, an upgrade was undertaken on the footpaths in Waterford Park. The upgrade will improve accessibility and access to the playground, toilets and other facilities in the park.



7. The Partnerships and Facilitation team is conducting a review of our Signage Sponsorship policy, with the aim of streamlining processes to enable clubs and community groups to access sponsorship revenue more readily.