

Mauao Historic Reserve Conservation Plan

s 7(2)(a) - Privacy

October 2015

Wildland Consultants Ltd

- **Head office - Rotorua. Satellite offices in Tauranga, Whakatāne, Auckland, Hamilton, Wellington, Christchurch, Dunedin**
- **Ecological restoration, survey and monitoring, assessments of ecological effects, natural area management**
- **New Zealand and overseas**
- **Hands on survey, technical and specialist advice, policy formulation (local, national, international)**

Presentation Overview

- Mauao Trust Vision
- Previous plans and 2015 methods
- Site values
- Cultural values
- Landscape values
- Archaeological values
- Management implementation
- Management units
- Key management drivers
- Key management actions

Vision of the Mauao Trust (from Cultural Values Assessment)

“The vision of the Mauao Trust, on behalf of the three iwi, seeks to give full expression to the relationship that the whānau, hapū, and iwi of Ngāi Te Rangi, Ngāti Ranginui and Ngāti Pūkenga have with their maunga tapu, maunga rongonui, Mauao”

The vision is supported by four aspirations:

- The restoration and protection of the health and wellbeing of Mauao for our future generations;
- Recognition of special relationship iwi have with Mauao;
- To give expression to the relationship of iwi with Mauao;
- Ensuring cultural significance is recognised, provided for, preserved and protected.

Previous Work and Plans

Background Work

- 1994, 1997, 1999, 2005, 2007, 2008, 2009, and 2014 - Site mapped, weed distributions and abundance described, and significance assessed

Plans

- 1998 - Mauao - Mount Maunganui Management Plan
- 2004 - Conservation plan for Mauao Historic Reserve
- 2015 - Updated Conservation Plan

2015 Plan Update

- **Stand Alone Studies undertaken in 2014**
 - Cultural values
 - Archaeological
 - Ecological assessment
 - CPTED assessment
- **2015**
 - Commissioned to update 2004 Plan
 - Collated existing recent information
 - Met with Park Ranger Mark Ray and TGA City Council representative Melony Atkins
 - Site inspection
 - Incorporated new information and strategies to update 2004 Plan

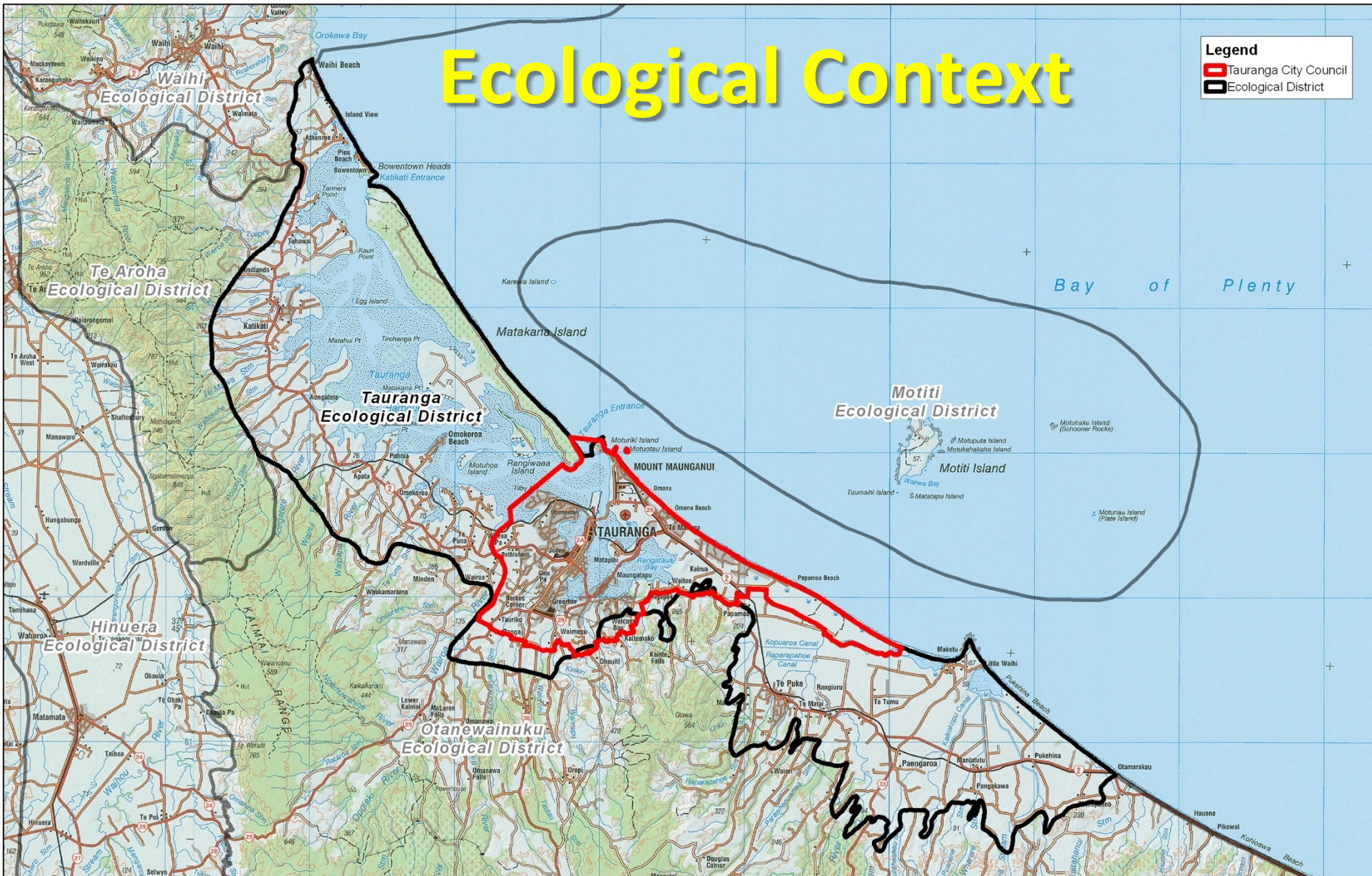
Values

- Significant cultural and spiritual values
- Unique volcanic landform close to the coast - regionally significant landscape feature
- Archaeological features on summit and southern slopes
- Significant ecological values
 - Enormous scope for ongoing active ecological restoration
- Significant recreation values
 - Large numbers of visitors (c. 1,000,000/annum)

Ecological Context

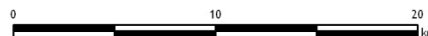
Legend

- Tauranga City Council
- Ecological District



Data Acknowledgment
 Ministry for the Environment, 2004. New Zealand Land Cover Database 2. Ministry for the Environment, Wellington, New Zealand.
 Project: 2444
 Client: -
 Ref: 03 0234
 Path: E:\gis\Tauranga\ItyPlanReview\Presentations\mxd
 File: Tauranga_CC_ED.mxd

Tauranga Ecological District and Tauranga City Council



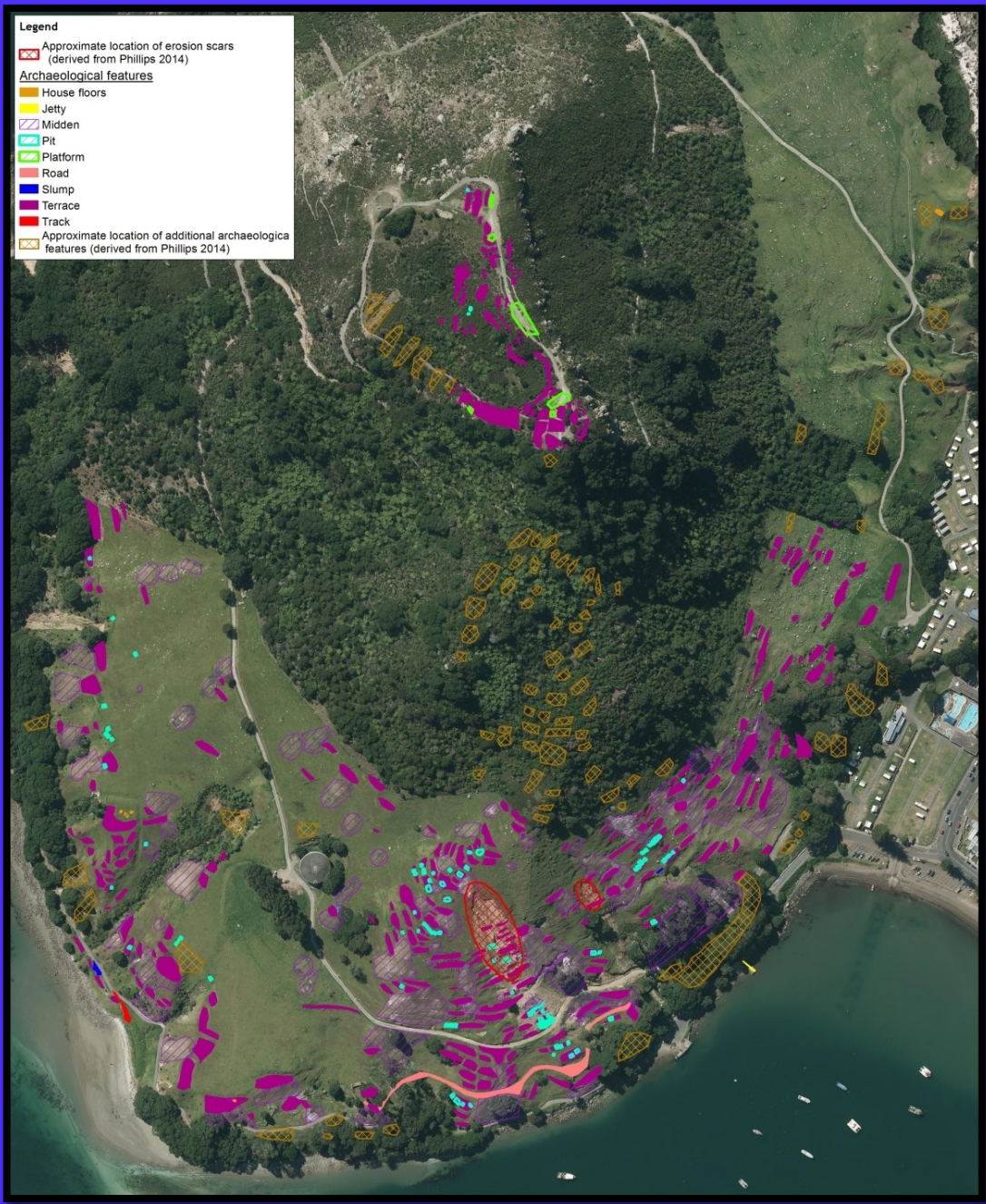
Wildlands
 www.wildlands.co.nz, 0508 146126
 Scale: 1:240,000
 Date: 04/08/07
 Cartographer: FM
 Format: A3

Cultural Values

- Foundation of identity and mana for Tauranga iwi.
- Ko Mauao te maunga, Ko Tauranga te Moana - identifies Tauranga people in time and place.
- Permanence of iwi and the intergenerational connection of people, place and time.
- Permanence of the mountain against the tides and natural forces of time.
- A sacred place.
- A source of healing and spiritual sustenance for whānau.

Landscape Context

- **Outstanding landscape feature.**
- **Meets several criteria when assessed in the context of the Resource Management Act**
 - Natural science factors, aesthetic values, expressiveness (legibility), transient values, whether the values are shared and recognised, value(s) to tangata whenua, historical associations



Archaeology

- 2003 study was updated in 2014
- 800-1,000 visible surface archaeological features

Archaeological Condition

Key Findings

- Rabbit damage - more prevalent since 2003, significant ongoing damage.
- Isolated effects on archaeological features from erosion.

Management Implementation

- Cultural values
- Archaeological management and specifications
- Crime prevention through environmental design
- Environmental weeds / pest plants
- Pest animals
- Management units
- Fire
- Ecological restoration
- Monitoring

Cultural Values

Opportunities to Enhance the Rangatiratanga, Mana, Kaitiaki, and Mauri of Mauao

- Meaningful interpretation and signage
- Ecological restoration
- Archaeological and other research

Archaeological Features

Threats

- **Overbuilding or landscape modification**
- **Quarrying of midden**
- **Access road repair and maintenance**
- **Fencing and livestock management**
- **Livestock grazing and trampling**
- **Vegetation growth and tree root intrusion from existing plants**
- **Inappropriate plantings**
- **Track formation**
- **Installation of visitor facilities**
- **Erosion and water run-off**
- **Human foot traffic**
- **Burrowing by rabbits**

CPTED

Crime Prevention Through Environmental Design

- Crown-lift trees and trim shrubs on track margins
- Relocate and update information signs
 - clearly indicate track routes
 - distance from entry and exit points
- Increase low growing vegetation on dangerous edges
- Keep facilities well maintained
- Install seating - passive surveillance
- Upgrading informal tracking – escape routes



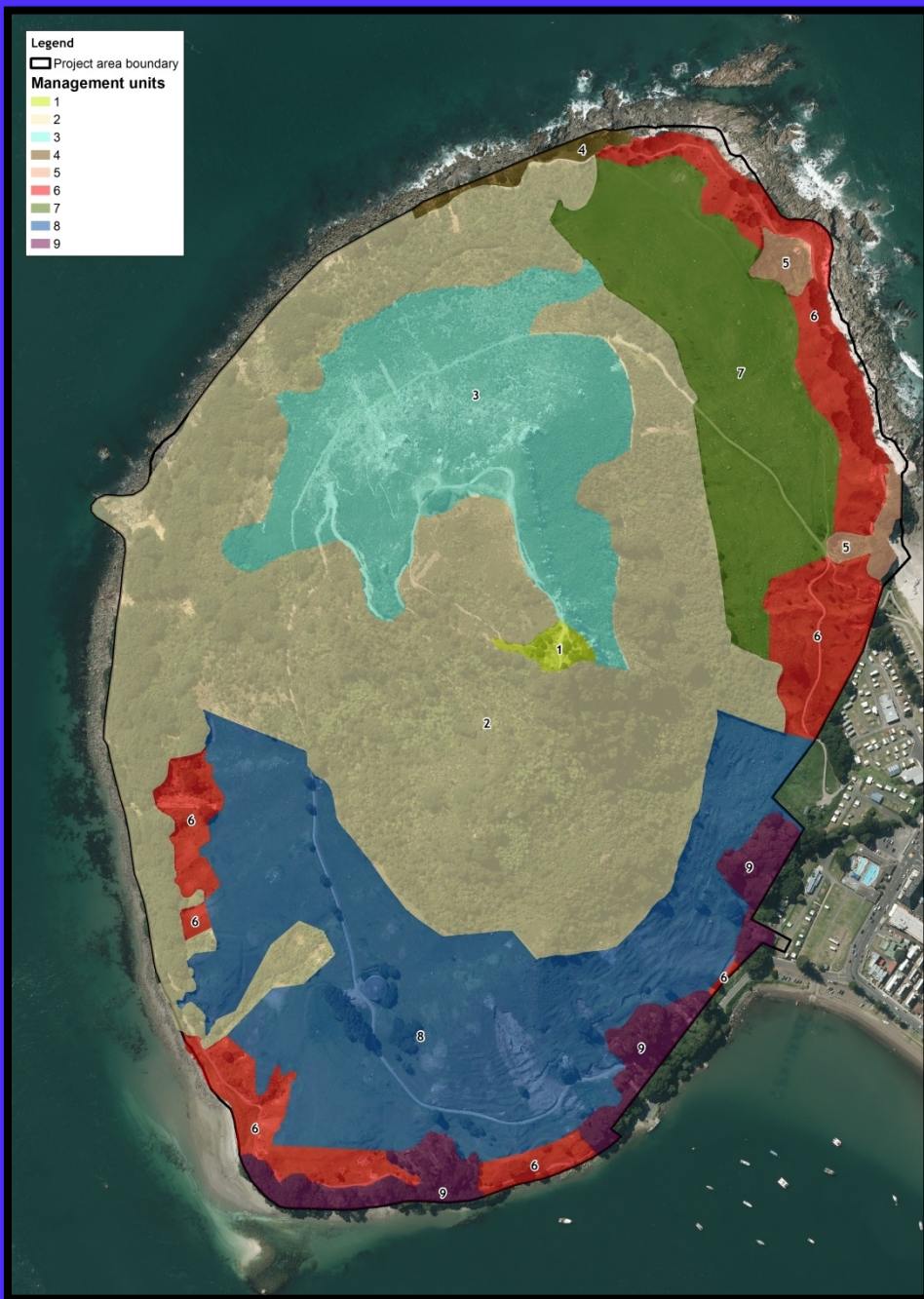
Pest Plants



Pest Animals



Pest animal Xcluder fence; Maungatautari Ecological Island, Waikato



Management Units

- Pest plant control priorities
- Restoration planting

Threatened Plants



Native spinach (*Tetragonia tetragonioides*) –
At Risk



Psilotum nudum –
Regionally Uncommon

Monitoring

- Archaeological features
- Indigenous vegetation
- Indigenous fauna
- Pest plants and pest animals
- Visitor use

Key Management Drivers

- **Cultural values**
- **Public enjoyment**
- **Archaeological preservation**
- **Fire awareness (e.g. pampas)**

Key Management Actions

- Rabbit control/exclusion
- Improving visitor experiences (interpretation, safety)
- Restoration and revegetation
- Fire awareness (e.g. pampas)
- Other pest animal control
- Monitoring





Wildland
CONSULTANTS